

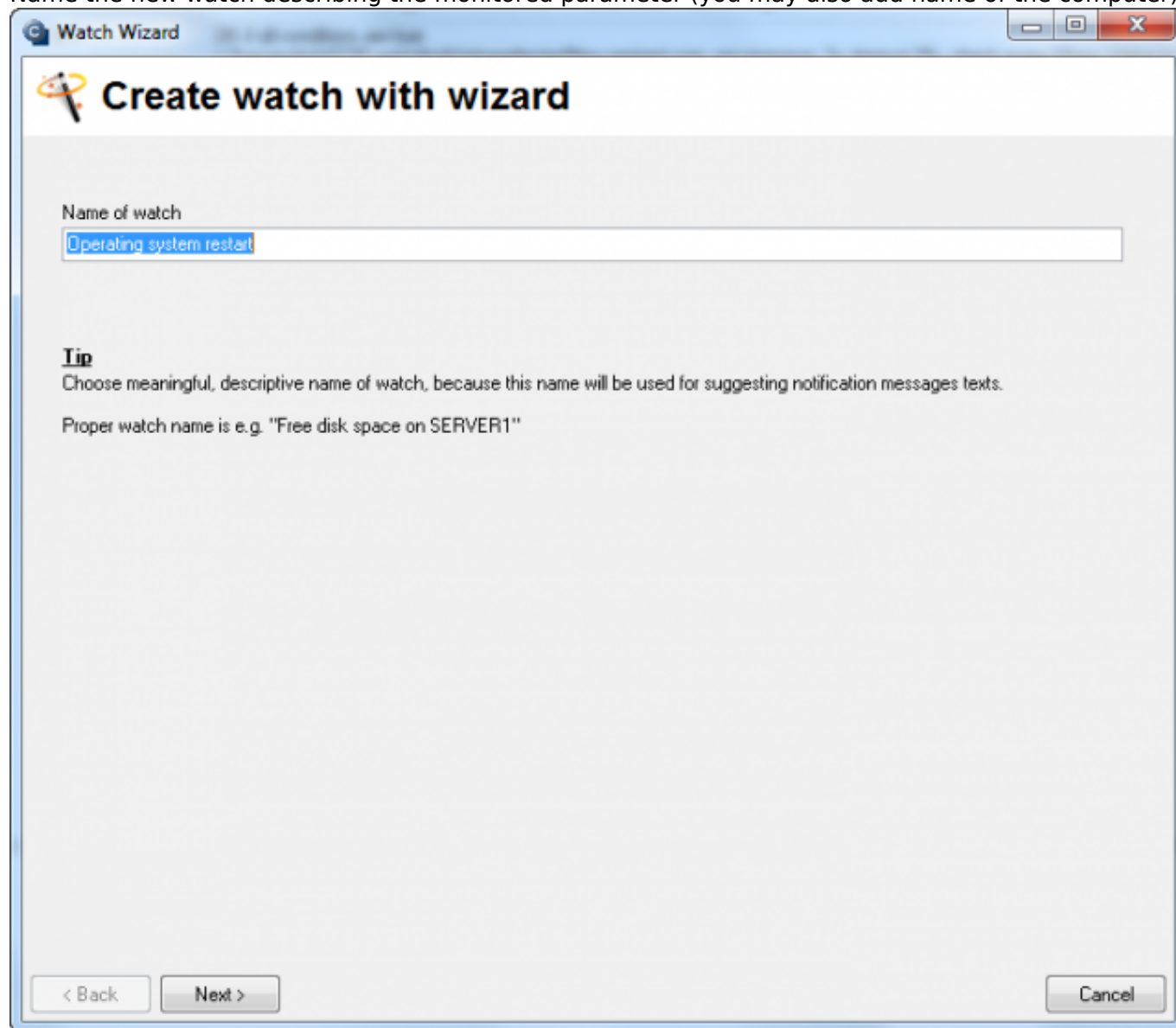
On Windows operating systems, there's an option to set a Watch to monitor start (restart) directly on the computer's desktop, via C-Monitor Console. In case this is your first Watch, first read the procedure [how to create Watches in C-MonitorConsole](#) [1]

Skip to [Setup through the condition OS system started](#)

## Setup through the condition Windows Running time

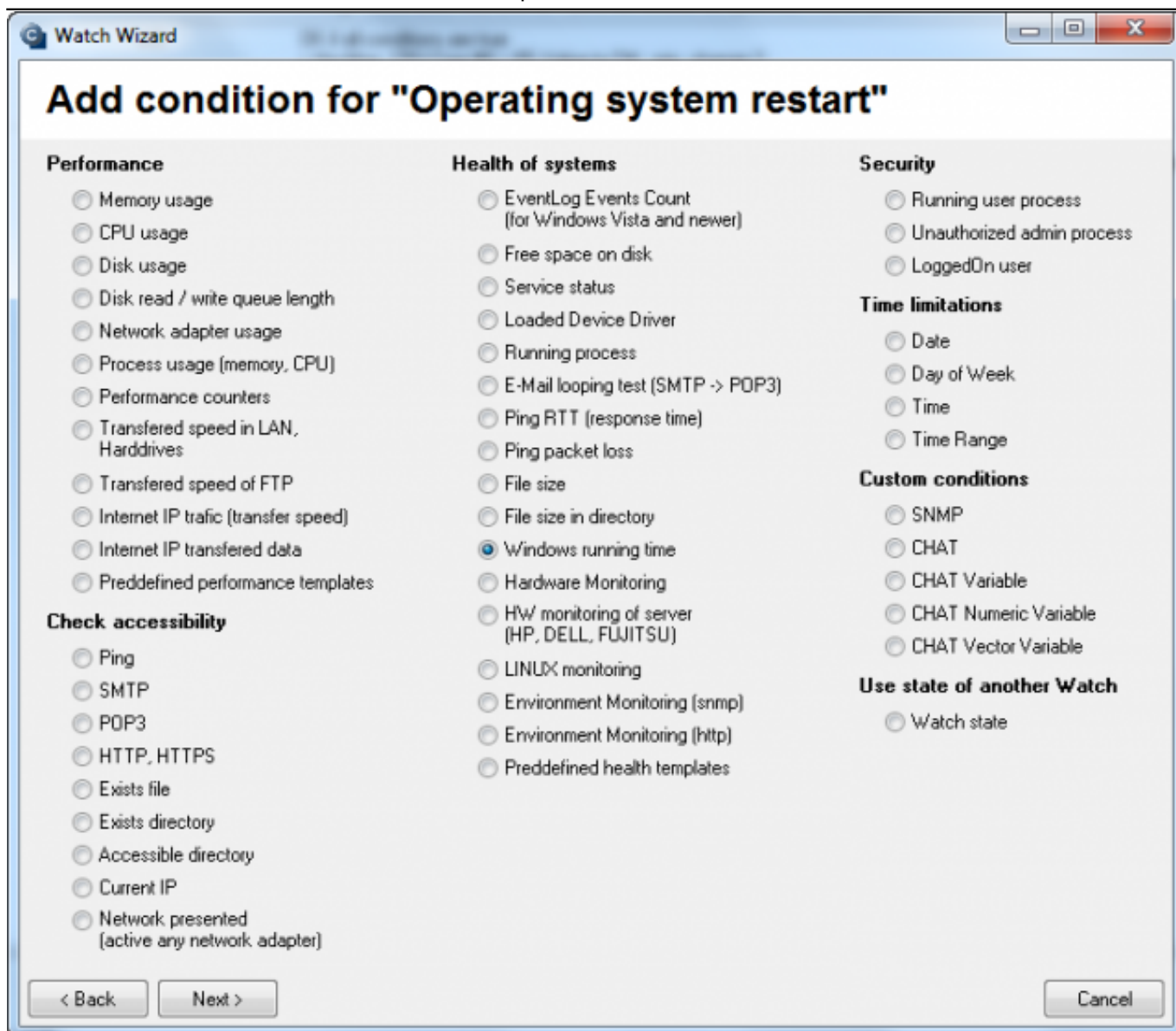
In C-Monitor Console in setup of Watches, add a new watch by clicking on Add Watch With Wizard.

Name the new watch describing the monitored parameter (you may also add name of the computer):



**Image: Obrázok: Pomenovanie nového Watchu**

Select the option "Windows running time"



**Image: Obrázok: Výber podmienky k Watchu**

**It is then necessary to set the condition's parameters.** The setup will be easier, if you read the condition as : The condition is true, if Windows running time is higher than 10min (corresponding to the image below). The condition is FAIL after computer start from about 5min (that's when C-Monitor begins to evaluate Watches) until the mentioned 10min. Therefore, you'll receive two notifications for one restart. At first FAIL, as the computer is running for less than 10 minutes, and then after the 10th minute passes, you'll be notified that the Watch has changed back to OK state.

The screenshot shows the 'Watch Wizard' window with the title 'Windows running time'. It contains the following fields and options:

- Operator:** A dropdown menu with the value '>' selected.
- Time From OS Start:** A text input field containing the value '10'.
- Unit:** A dropdown menu with the value 'min' selected.
- Value from this condition send to CM server:** A group box containing three radio buttons:
  - ☒ If value changes more than 10 min (The '10' is in a text input field).
  - ☐ Always
  - ☐ Never
- ☐ Assess the state of watch

At the bottom of the window, there are three buttons: '< Back', 'Next >', and 'Cancel'.

**Image: Obrázok: Nastavenie podmienky k Watchu**

You may complete the watch creation immediately by pressing "Skip Actions", if addition of other actions, performed at change of the watch's state, is not necessary. ([for setup of Actions, read here](#) [2])

Watch Wizard

## Conditions for "Operating system restart"

- 1 Windows Running Time < 10min  
Check on each watch state evaluation  
Value will be sent to CM Server only if change to last sent value is more than 10

Add Condition Edit Condition Delete Condition

State of watch is **OK** if all conditions are true **FAIL** - if at least one condition is false

☐ Delay for FAIL state. (Useful for suppressing short term FAIL state)

Show Advanced Options

**Note:** Watches are active from 5 min after the operating system start

< Back Next > Skip Actions >> Cancel

**Image: Obrázok: Dokončenie vytvárania watchu**

An example of notification, and a way to verify if the settings are correct, is at the end of article for setup of this Watch through CM portal [here](#) [3].

## Setup through the condition OS system started

In C-Monitor Console in setup of Watches, add a new watch by clicking on Add Watch With Wizard.

Name the new watch describing the monitored parameter (you may also add name of the computer):

Watch Wizard

## Create watch with wizard

Name of watch

**Tip**  
Choose meaningful, descriptive name of watch, because this name will be used for suggesting notification messages texts.  
Proper watch name is e.g. "Free disk space on SERVER1"

< Back    Next >    Cancel

Image: Obrázok: Pomenovanie nového Watchu

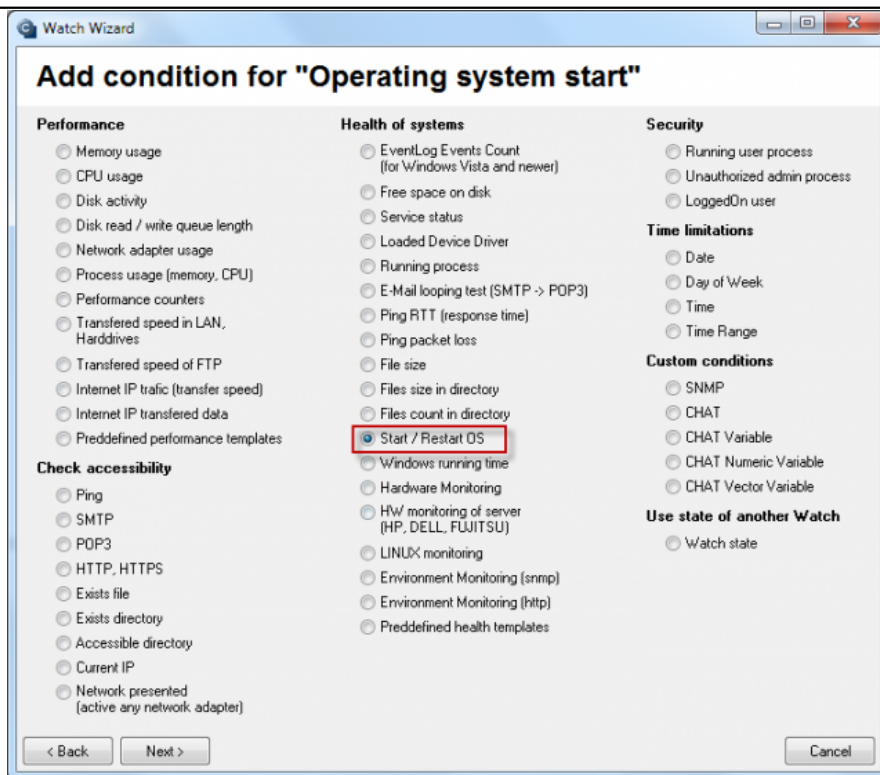


Image: Obrázok: Výber podmienky k Watchu

**It is then necessary to set the condition's parameters.** The setup will be easier, if you read the condition as : The condition is true, if the operating system has not started within the last 8 minutes (corresponding to the image below). The condition is FAIL if the operating system started during the last 8 minutes, therefore, the PC was restarted.

Select the option "Start/Restart OS"

The screenshot shows a window titled "Watch Wizard" with a subtitle "Start / Restart OS". The window contains the following configuration options:

- OS was started**: A dropdown menu with "No" selected.
- In last minutes**: A text input field containing the value "8".
- Value from this condition send to CM server**: A group box containing two radio buttons: "Always" (selected) and "Never".
- Assess the state of watch**: An unchecked checkbox.

At the bottom of the window, there are three buttons: "< Back", "Next >", and "Cancel".

Image: Obrázok: Nastavenie podmienky k Watchu

You may complete the watch creation immediately by pressing "Skip Actions", if addition of other actions, performed at change of the watch's state, is not necessary. ([for setup of Actions, read here](#) [2])

Image: Obrázok: Dokončenie vytvárania watchu

An example of notification, and a way to verify if the settings are correct, is at the end of article for setup of this Watch through CM portal [here](#) [3].

Date:

03/26/2012



[4]



[5]



[6]



[7]





[8]



[9]



[10]



[11]

## Links

[1] <https://www.customermonitor.eu/how-cm-works-0/monitoring-and-diagnostics/introduction-setting-online-monitoring-watches/basic-watch>

[2] <https://www.customermonitor.eu/how-cm-works-0/monitoring-and-diagnostics/introduction-setting-online-monitoring-watches/settings>

[3] <https://www.customermonitor.eu/how-cm-works-0/monitoring-and-diagnostics/start/restart-computer/setup-monitoring-operating-system-0>

[4] [https://www.customermonitor.eu/sites/default/files/Operating\\_system\\_restart\\_wizard.png](https://www.customermonitor.eu/sites/default/files/Operating_system_restart_wizard.png)

[5] <https://www.customermonitor.eu/sites/default/files/Add%20condition.png>

[6] [https://www.customermonitor.eu/sites/default/files/Windows%20running%20time%20setup\\_0.png](https://www.customermonitor.eu/sites/default/files/Windows%20running%20time%20setup_0.png)

[7] <https://www.customermonitor.eu/sites/default/files/Windows%20running%20time%20setup%202.png>

[8] <https://www.customermonitor.eu/sites/default/files/os%20start%201.png>

[9] [https://www.customermonitor.eu/sites/default/files/22\\_0.png](https://www.customermonitor.eu/sites/default/files/22_0.png)

[10] [https://www.customermonitor.eu/sites/default/files/2\\_36.png](https://www.customermonitor.eu/sites/default/files/2_36.png)

[11] [https://www.customermonitor.eu/sites/default/files/3\\_26.png](https://www.customermonitor.eu/sites/default/files/3_26.png)