

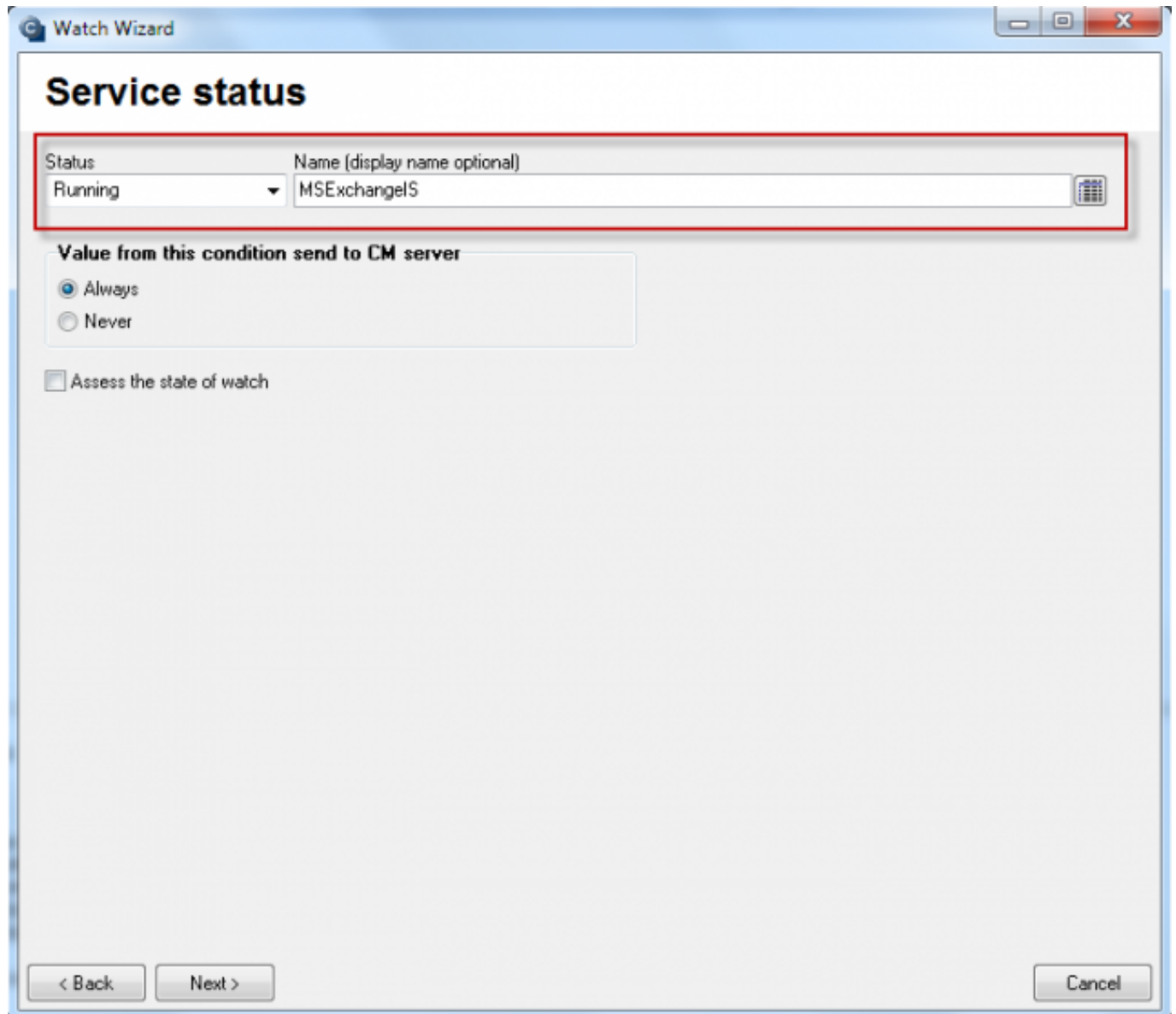
In this article you'll find out how you can set monitoring of availability and function of Exchange Server. The first watch serves to monitoring of running services (Service Running), this watch is configured through condition Service status and is used to verify if all Exchange Server's required services are running.

Service status

A condition used to evaluate state of services. One of the basic functionalities for programs' status.

You can monitor, whether the selected service is: Running, Not Running, Installed, Not Installed, Stopped, Not Stopped, Start Pending, Not Start Pending

For Exchange server, there are two services monitored - **MSExchangeIS**, **MSExchangeTransport**. Set the condition to Running, so if any of these services fails due to any reason, you'll be notified about it by email or SMS.



The screenshot shows the 'Watch Wizard' window with the 'Service status' tab selected. The 'Status' dropdown is set to 'Running' and the 'Name (display name optional)' text box contains 'MSExchangeIS'. Below this, the 'Value from this condition send to CM server' section has 'Always' selected with a radio button. The 'Assess the state of watch' checkbox is unchecked. At the bottom, there are '< Back', 'Next >', and 'Cancel' buttons.

Status	Name (display name optional)
Running	MSExchangeIS

Value from this condition send to CM server

☒ Always
☐ Never

☐ Assess the state of watch

< Back Next > Cancel

Image: Sledovanie funkčnosti služieb pre Exchange Server

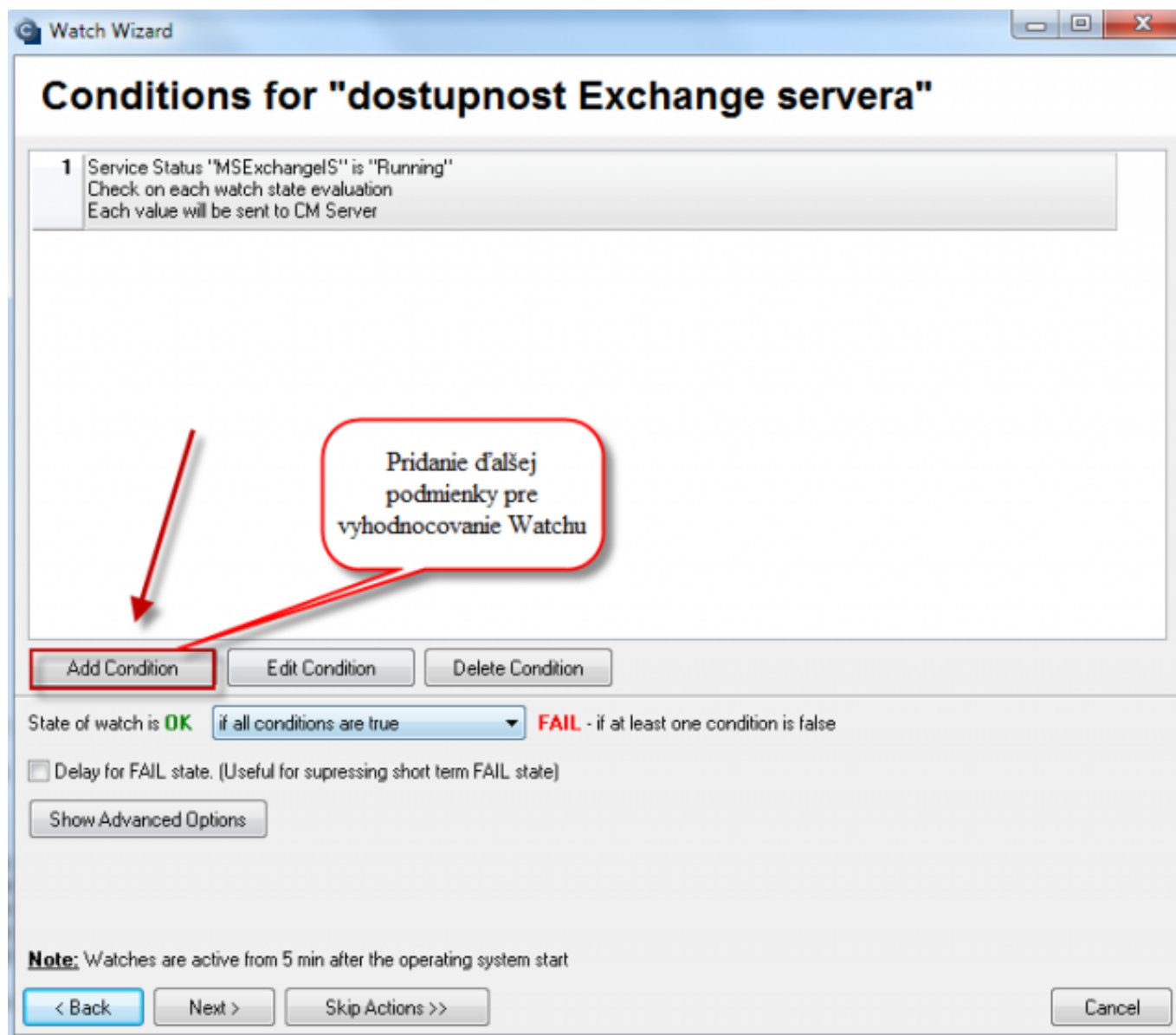


Image: Pridanie ďalšej podmienky pre vyhodnocovanie Watchu - MSExchangeTransport

E-Mail Loop Test

E-Mail Loop Test is an extended analogy of the conditions POP3 and SMTP. This condition will examine a message's submission through SMTP server, and subsequently checks reception of the message on the second server through POP3 protocol. Setup of watch for E-Mail Loop Test is displayed on the following image.

On the image, you can see an example for testing of sending from the server smtp.company1.sk (step 1), using defined addresses of the sender, receiver and delay in seconds, after which the message's reception (step 2) on pop3.company2.sk begins to be tested (step 3). In step 4, set required period for the test's execution.

Condition Definition

Available Functions

- Directory Accessible
- LoggedOn User
- Windows Running Time
- Operating System started
- Date
- Day of Week
- Time
- TimeRange
- Current IP
- Performance Counter
- Hardware Monitoring
- Ping
- Ping RoundTripTime
- Ping Packet Loss
- SMTP
- POP3
- HTTP, HTTPS
- Transfer Speed
- Transfer speed of FTP
- SNMP
- Environment Monitoring (snmp)
- Environment Monitoring (http)
- E-Mail Loop Test**

E-Mail Loop Test

SMTP Server [Port]
smtp.company1.sk 25

Authentication [SMTP Login] [SMTP Password]
Simple Login user *****

Send E-Mail From Send E-Mail To
mailtester@company1.sk mailtester@company2.sk

[Wait sec]
30

POP3 Server [Port]
pop3.company2.sk 110

Authentication [POP3 Login] [POP3 Password]
Simple Login user *****

Operation Test Period Unit
Successful 10 min

Value from this condition send to CM server

☒ Always
☐ Never

☐ Assess the state of watch

OK Cancel

Image: Nastavenie watchu pre E-Mail Loop Test

V exchange 2003 až 2010 je potrebné zapnúť službu Exchange pop3, je potrebná voľba automatického štartu.

In exchange 2003 to 2010 it's necessary to enable the service Exchange pop3, so you must enable automatic start.

In Exchange 2007, after enabling the service Microsoft Exchange 2007, a few more steps have to be performed!

They're performed in Exchange PowerShell command (it's a program icon within Exchange program group)

1. Enable Plaintext input of name and password for the entire server
Set-PopSettings -LoginType PlainTextLogin

(otherwise you'll get the error message : -ERR Command is not valid in this state.)

2. Enable POP3 access for the user
Set-CASMailbox -Identity **name_of_box** -POPEntabled \$true

and we can also define, if this is a default protocol, but this isn't really necessary

Set-CASMailbox -Identity **name_of_box** -PopUseProtocolDefaults \$true

Free space on disk

This condition serves to check of a drive's free space, for Exchange server it's used for monitoring of free space for exchange datastore, because if they were filled up, the users wouldn't receive any emails.

By clicking on the disk icon in step 1, you'll see a dropdown list of disks - select datastore of the exchange server.

In step 2, set a suitable operator and value of selected units (step 3), which means minimal free space on the disk. If it gets below the defined value, the Watch will be switched to Fail state, and you'll be notified about the lack of free space by email or SMS message.

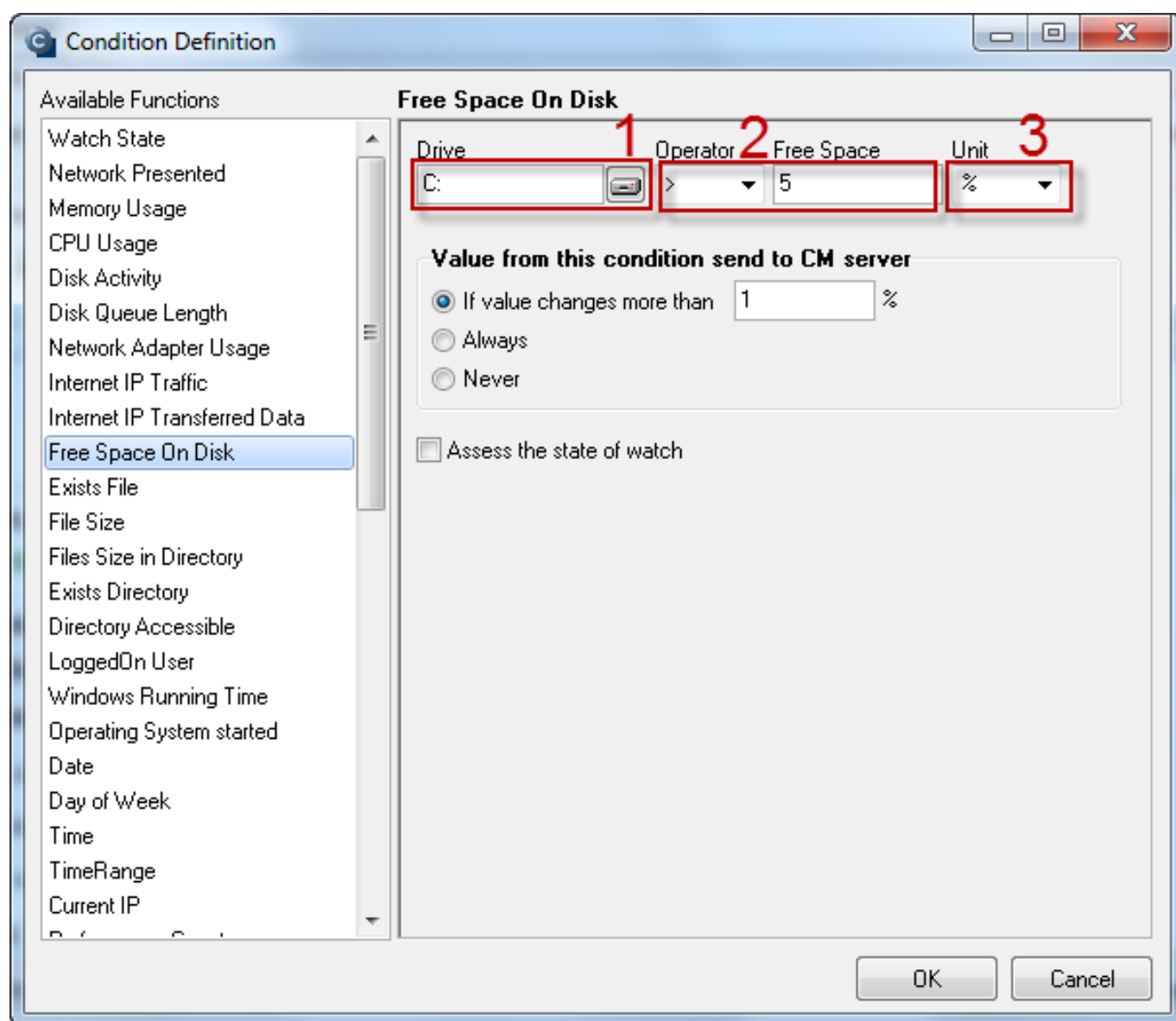


Image: Nastavenie sledovania voľného miesta na disku

Evaluation of these watches can be also viewed on CM Portal, in the section *Presentation and Evaluation -> Presentation -> Watches online*

monitoring. In this section you can also remotely edit particular watches and change their evaluation parameters as needed.

Watches (Online monitoring)

Spoločnosť: exchange Počítač & Umiestnenie: Current status: Pod sebou: ☒ True ☒ False ☒ Unknown ☐ Vypnuté watche ☐ Len online PC

Zoznam watches [zobrazené 2 položky]

Stav	Meno	Hodnota	Posledná zmena stavu	Podmienky k určenia stavu	CM-ID počítača	Meno počítača v sieti	Umiestnenie	Posl. online spojenie s CM	
OK	Exchange Server - Volne miesto pre databazu	Free Space S1: 116.82 GBx10 MB Free Space T1: 28.47 GBx10 MB	28. Aug 2012 13:06:52	OK - because all conditions are true ● TRUE - Free Space on "S1" (116.82 GB) > 1000 MB ● TRUE - Free Space on "T1" (28.47 GB) > 1000 MB	MD5V06	MDP-EX	Serverovna, Miestnosť 3.11	31. Aug 2012 15:57:20	Editovať
OK	Exchange Server - Mail loop test	E-MailLoopTest: smtp.as.ak-mdbp-ex successful	20. Aug 2012 13:06:52	OK - because all conditions are true ● TRUE - successful E-MailLoopTest: smtp.as.ak-mdbp-ex (31. 8. 2012 15:28:30) Delay for FAILED state is 35m 0s	MD5V06	MDP-EX	Serverovna, Miestnosť 3.11	31. Aug 2012 15:57:28	Editovať
OK	Exchange running	Service MSExchangeIS Running Service MSExchangeTransport Running	26. Aug 2012 00:22:29	OK - because all conditions are true ● TRUE - Service "MSExchangeIS" status is Running, current Running ● TRUE - Service "MSExchangeTransport" status is Running, current Running	MD5V06	MDP-EX	Serverovna, Miestnosť 3.11	31. Aug 2012 15:57:28	Editovať

Image: Výsledné nastavenie všetkých troch watchov na sledovanie dostupnosti Exchange servera

HTTP, HTTPS

By this condition you can monitor function of a required HTTP, or HTTPS location, using the http or https protocol. In our case, we'll monitor availability of the page for **Exchange server's web access**. The setup procedure is illustrated on the following images.

Watch Wizard

Add condition for "dostupnost web acces"

Performance <ul style="list-style-type: none"><input type="radio"/> Memory usage<input type="radio"/> CPU usage<input type="radio"/> Disk activity<input type="radio"/> Disk read / write queue length<input type="radio"/> Network adapter usage<input type="radio"/> Process usage (memory, CPU)<input type="radio"/> Performance counters<input type="radio"/> Transferred speed in LAN, Harddrives<input type="radio"/> Transferred speed of FTP<input type="radio"/> Internet IP trafic (transfer speed)<input type="radio"/> Internet IP transferred data<input type="radio"/> Preddefined performance templates	Health of systems <ul style="list-style-type: none"><input type="radio"/> EventLog Events Count (for Windows Vista and newer)<input type="radio"/> Free space on disk<input type="radio"/> Service status<input type="radio"/> Loaded Device Driver<input type="radio"/> Running process<input type="radio"/> E-Mail looping test (SMTP -> POP3)<input type="radio"/> Ping RTT (response time)<input type="radio"/> Ping packet loss<input type="radio"/> File size<input type="radio"/> Files size in directory<input type="radio"/> Files count in directory<input type="radio"/> Start / Restart OS<input type="radio"/> Windows running time<input type="radio"/> Hardware Monitoring<input type="radio"/> H/W monitoring of server (HP, DELL, FUJITSU)<input type="radio"/> LINUX monitoring<input type="radio"/> Environment Monitoring (snmp)<input type="radio"/> Environment Monitoring (http)<input type="radio"/> Preddefined health templates	Security <ul style="list-style-type: none"><input type="radio"/> Running user process<input type="radio"/> Unauthorized admin process<input type="radio"/> LoggedOn user Time limitations <ul style="list-style-type: none"><input type="radio"/> Date<input type="radio"/> Day of Week<input type="radio"/> Time<input type="radio"/> Time Range Custom conditions <ul style="list-style-type: none"><input type="radio"/> SNMP<input type="radio"/> CHAT<input type="radio"/> CHAT Variable<input type="radio"/> CHAT Numeric Variable<input type="radio"/> CHAT Vector Variable Use state of another Watch <ul style="list-style-type: none"><input type="radio"/> Watch state
--	---	--

Check accessibility

- ☐ Ping
- ☐ SMTP
- ☐ POP3
- ☒ HTTP, HTTPS
- ☐ Exists file
- ☐ Exists directory
- ☐ Accessible directory
- ☐ Current IP
- ☐ Network presented (active any network adapter)

< Back Next > Cancel

Image: Podmienka pre sledovanie HTTP, HTTPS

Copy the address for web access.

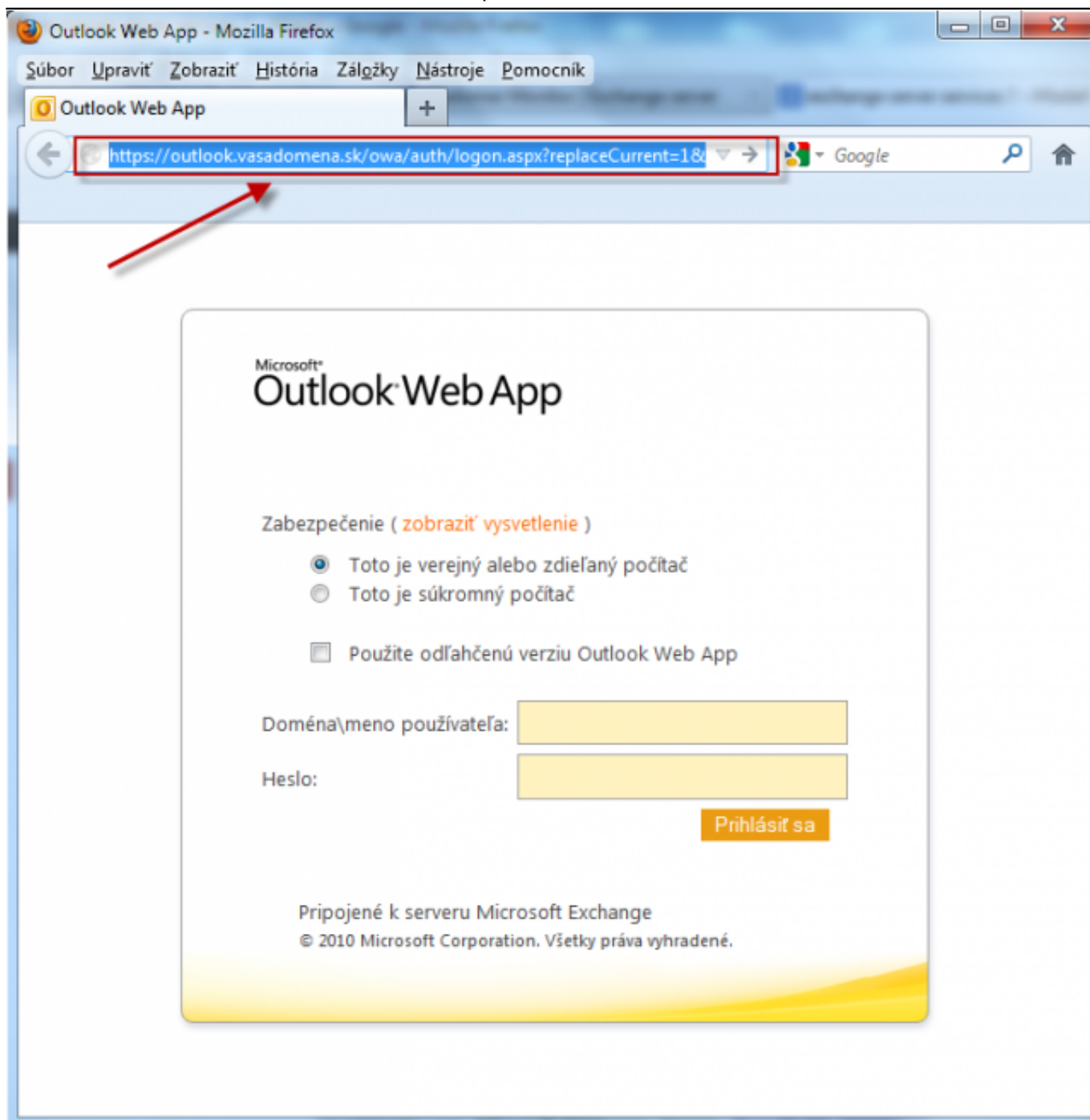


Image: Adresa pre web acces, ktorú skopírujete do nastavení watchu

Copy the web access address into the field Url, and press the button highlighted in the next image to set the monitored part of the web access page.

Watch Wizard

HTTP, HTTPS

Url
`https://outlook.vasadomena.sk/owa/auth/logon.aspx?replaceCurrent=1&url=https%3a%2f%2foutlook.seal.sk%2f0wa%2f`

[Required string in the server response]

[Http User] [Http Password]

Allowed compression: All supported by C-Monitor Request ver.: 1.0

[Proxy Server] [Port]

[Proxy User] [Proxy Password]

[Retries] [Timeout in sec]

Operation: Test Period: 1 Unit: min

Value from this condition send to CM server

☒ Always
☐ Never

☐ Assess the state of watch

< Back Next > Cancel

Tu si vyberiete, ktorá časť sa má sledovať a vyhodnocovať

Image: Do nastavenia podmienky vložíte adresu web accesu Exchange servera

Select part, whose showing is going to be monitored, we recommend the part where name and password is entered.

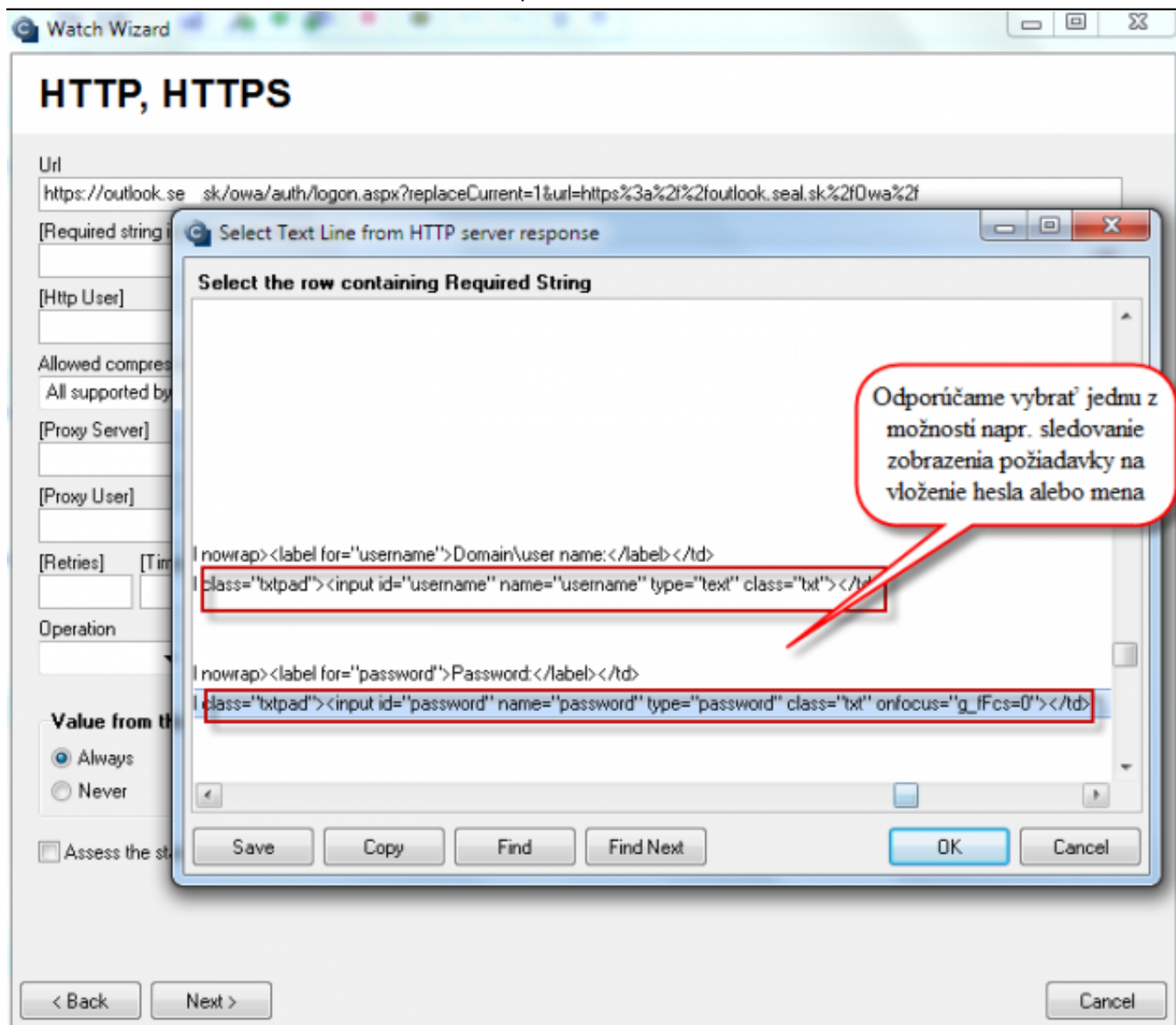


Image: Vyberiete si text, ktorého zobrazenie sa má kontrolovať, odporúčame časť kde sa zobrazuje výzva na zadanie mena alebo hesla

Enter condition for evaluation and time interval of the availability tests.

Watch Wizard

HTTP, HTTPS

Url

[Required string in the server response]

[Http User] [Http Password]

Allowed compression: All supported by C-Monitor Request ver.: 1.0

[Proxy Server] [Port]

[Proxy User] [Proxy Password]

[Retries] [Timeout in sec]

Operation: Successful Test Period: 1 Unit: min

Value from this condition send to CM server

☒ Always
☐ Never

☐ Assess the state of watch

< Back Next > Cancel

Image: Nastavíte podmienky pre vyhodnocovanie a kliknete na tlačidlo next

Date:

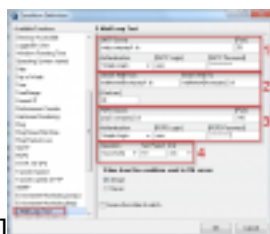
02/11/2012



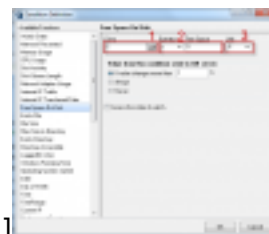
[1]



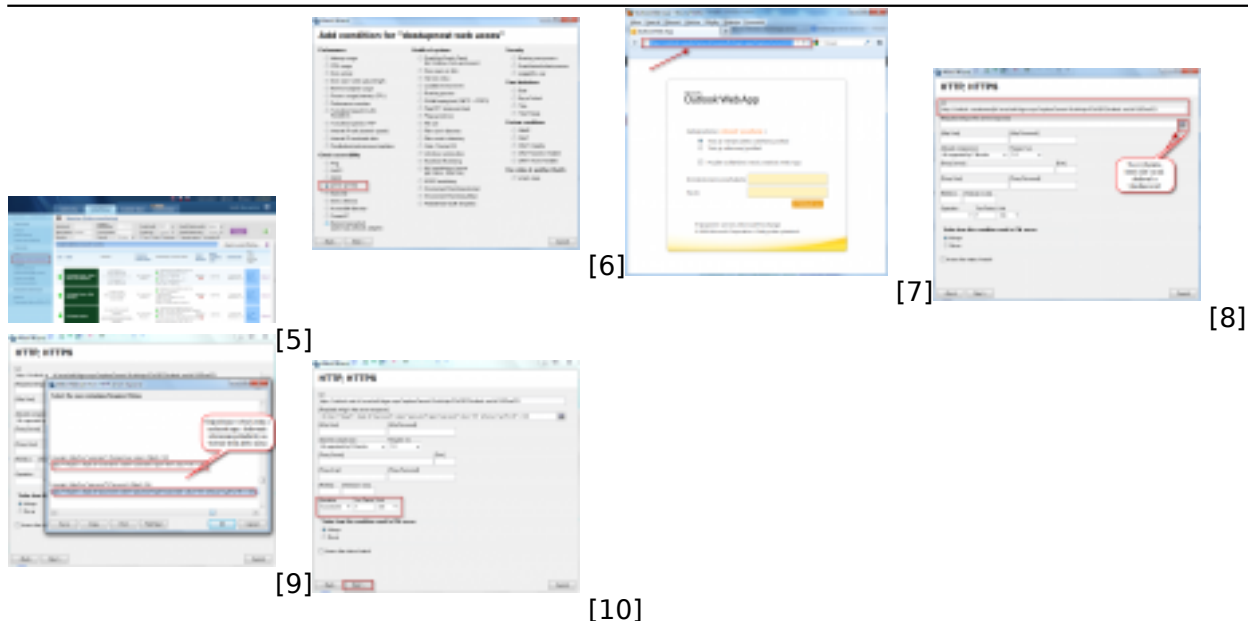
[2]



[3]



[4]



Links

- [1] <https://www.customermonitor.eu/sites/default/files/service%20runing.png>
- [2] <https://www.customermonitor.eu/sites/default/files/service%20runing2.png>
- [3] https://www.customermonitor.eu/sites/default/files/E-Mail%20Loop%20Test_0.png
- [4] https://www.customermonitor.eu/sites/default/files/free%20space%20on%20disk_0.png
- [5] <https://www.customermonitor.eu/sites/default/files/watche%20final.png>
- [6] <https://www.customermonitor.eu/sites/default/files/web%20acces%201.png>
- [7] <https://www.customermonitor.eu/sites/default/files/web%20acces%202.png>
- [8] <https://www.customermonitor.eu/sites/default/files/web%20acces%203.png>
- [9] <https://www.customermonitor.eu/sites/default/files/web%20acces%204.png>
- [10] <https://www.customermonitor.eu/sites/default/files/web%20acces%205.png>