

We release Windows client for the CM Server version 2.8

The package C-Monitor 2.8.690.0 contains the following fixes and improvements:

- [New Watches templates](#)
- [Internet Bandwidth Monitor for WIN 8,2012, conflict-free version for WIN7](#)
- [Admin authorization to perform C-Monitor client registration executed under a regular user](#)
- [View of top applications and IP addresses burdening the internet directly in the Info-panel](#)
- [Instant designation of which process most burdens the drive, directly in the Info-panel](#)
- [Historic overview, which processes most loaded the drive](#)
- [Unveiled meaning of svchost.exe and similar processes](#)

New Watches templates:

EATON/MGE UPS Status v 1.1 – new template, which is used for status monitoring of a UPS station (input voltage, remaining battery capacity, load)

VMware/ESX Datastore – new template, solely used to check availability and free space status on partitions vmware 5.x and higher (with no further information).

Synology health DSM 5.1 and higher v1.3 – new template for Synology with system DSM 5.1 and higher. This version has system partitions already separated during the check of free space. System partitions usually have just a few hundred MB and they used to cause problems at evaluation of free space status together with other partitions.

Watch Wizard

Add condition for "Watch wizard"

Performance

- ☐ Memory usage
- ☐ CPU usage
- ☐ Disk activity
- ☐ Disk read / write queue length
- ☐ Network adapter usage
- ☐ Process usage (memory, CPU)
- ☐ Performance counters
- ☐ Transferred speed in LAN, Harddrives
- ☐ Transferred speed of FTP
- ☐ Internet IP traffic (transfer speed)
- ☐ Internet IP transferred data
- ☐ Preddefined performance templates

Check accessibility

- ☐ Ping
- ☐ SMTP
- ☐ POP3
- ☐ HTTP, HTTPS
- ☐ Exists file
- ☐ Exists directory
- ☐ Accessible directory
- ☐ Current IP
- ☐ Network presented (active any network adapter)

Health of systems

- ☐ EventLog Events Count (for Windows Vista and newer)
- ☐ Free space on disk
- ☐ Service status
- ☐ Loaded Device Driver
- ☐ Running process
- ☐ E-Mail looping test (SMTP -> POP3)
- ☐ Ping RTT (response time)
- ☐ Ping packet loss
- ☐ File size
- ☐ Files size in directory
- ☐ Files count in directory
- ☐ Start / Restart OS
- ☐ Windows running time
- ☐ Hardware Monitoring
- ☐ HW monitoring of server (HP, DELL, FUJITSU)
- ☐ LINUX monitoring
- ☐ Environment Monitoring (snmp)
- ☐ Environment Monitoring (http)
- ☒ Preddefined health templates

APC UPS Low energy v1.0 (SNMP from Powerchute agent)
APC UPS Status v1.0 (SNMP from Powerchute agent)
Eaton/MGE UPS Status v 1.1 (over NetworkCard) ←
MS SQL - Access test v1.0
QNAP Health v 1.5
SYNOLOGY Health Status DSM 5.1 and higher v1.0 ←
SYNOLOGY Health v 1.2
vmware ESX health plugin 1.1
vmware ESX only Free Space plugin 1.0 ←
WIN Server Roles - Event Errors in last 24h v1.0

Security

- ☐ Running user process
- ☐ Unauthorized admin process
- ☐ LoggedOn user

Time limitations

- ☐ Date
- ☐ Day of Week
- ☐ Time
- ☐ Time Range
- ☐ User Inactivity Time

Custom conditions

- ☐ SNMP
- ☐ SNMP Numeric Value
- ☐ CHAT
- ☐ CHAT Variable
- ☐ CHAT Numeric Variable
- ☐ CHAT Vector Variable
- ☐ CHAT Vector Numeric Variable

Use state of another Watch

- ☐ Watch state

< Back Next > Cancel

Image: Nové voliteľné šablóny pre Watches

Internet Bandwidth Monitor for WIN 8,2012, conflict-free version for WIN7:

IBM now works with operating systems Microsoft Windows 8 and higher, 2012, 2012R2. We've applied the new system of data reading for Windows 7 as well, by which we've removed the potentially conflicting driver (MicroOLAP), which has so far been used to determine the volume of data transferred to internet locations.

Admin authorization to perform C-Monitor client registration executed under a regular user:

When installing C-Monitor client under a user without admin permissions, after the base part, you've encountered a dialog to enter admin name and password, so that the registration can be executed. Acceptation of admin name in this dialog has been adjusted also for the regular format DOMAIN\user, not just the format "user@DOMAIN".

View of top applications and IP addresses burdening the internet directly in the Info-

panel:

If an admin or a user wants to find out what's currently burdening the computer he is operating, he no longer needs to login to CM portal (online information, resp. all details in the separate section IBM), or browse the information through C-MonitorConsole (from the left menu Network info). It is now sufficient to just open the Information panel from the C-Monitor client icon by hovering over the C-icon and get the cursor over any graph showing network load of the adapter. This will show 5 top applications and the

Warning: The computer must have monitoring of internet transfers enabled in the C-Monitor settings (via CM Portal)

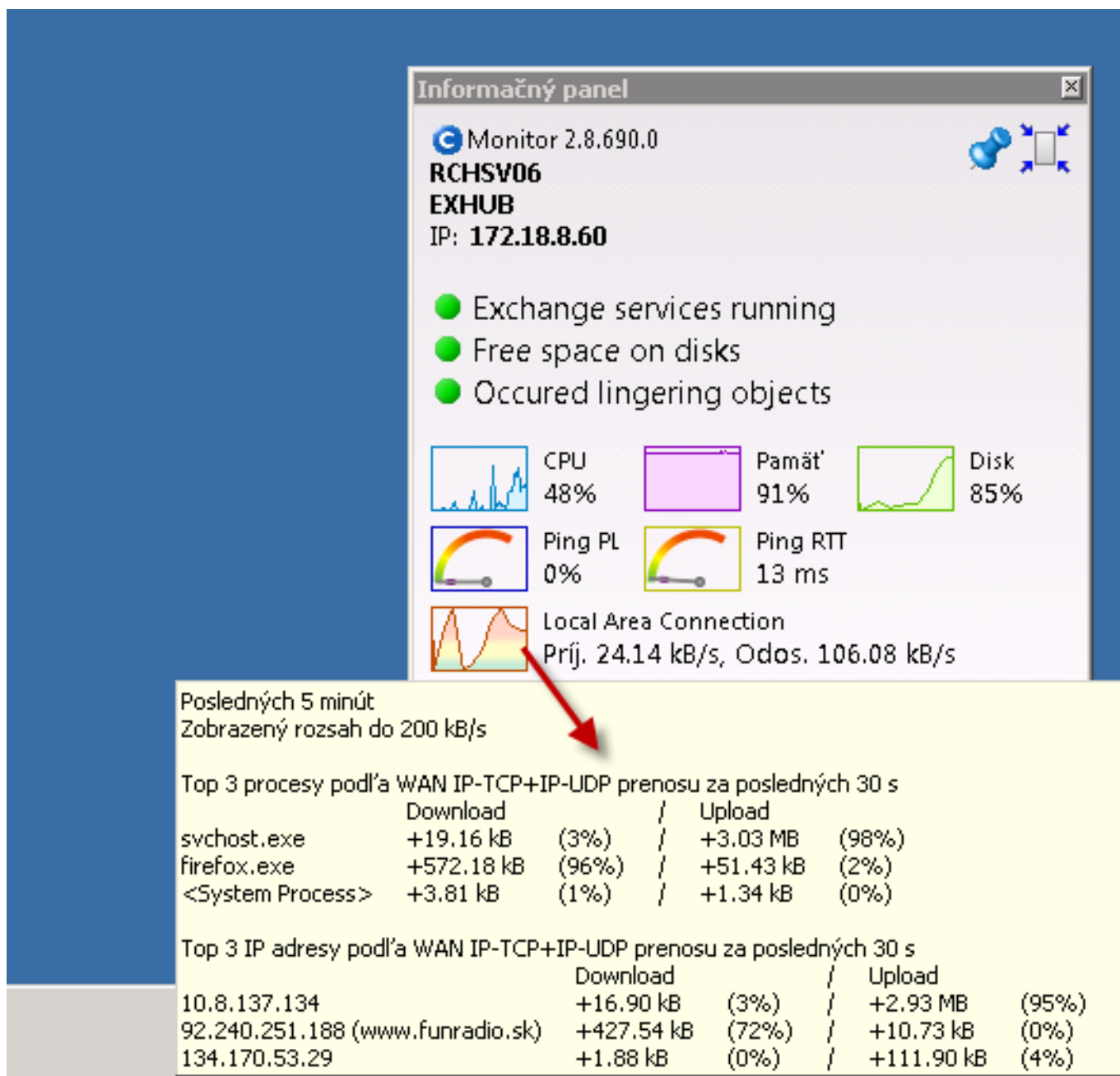


Image: Top aplikácie a IP adresy, ktoré najviac vyťažujú internetovú linku

Instant designation, which process most burdens the drive, directly in the Info-panel:

Similarly to the previous case, get the cursor over the graph for disk load in the information panel, and a tooltip window will show, which contains a list of applications that had the largest transfers with the disk system (Read+Write) for the past 30sec.

Additional information: This information cannot be found on CM portal yet.

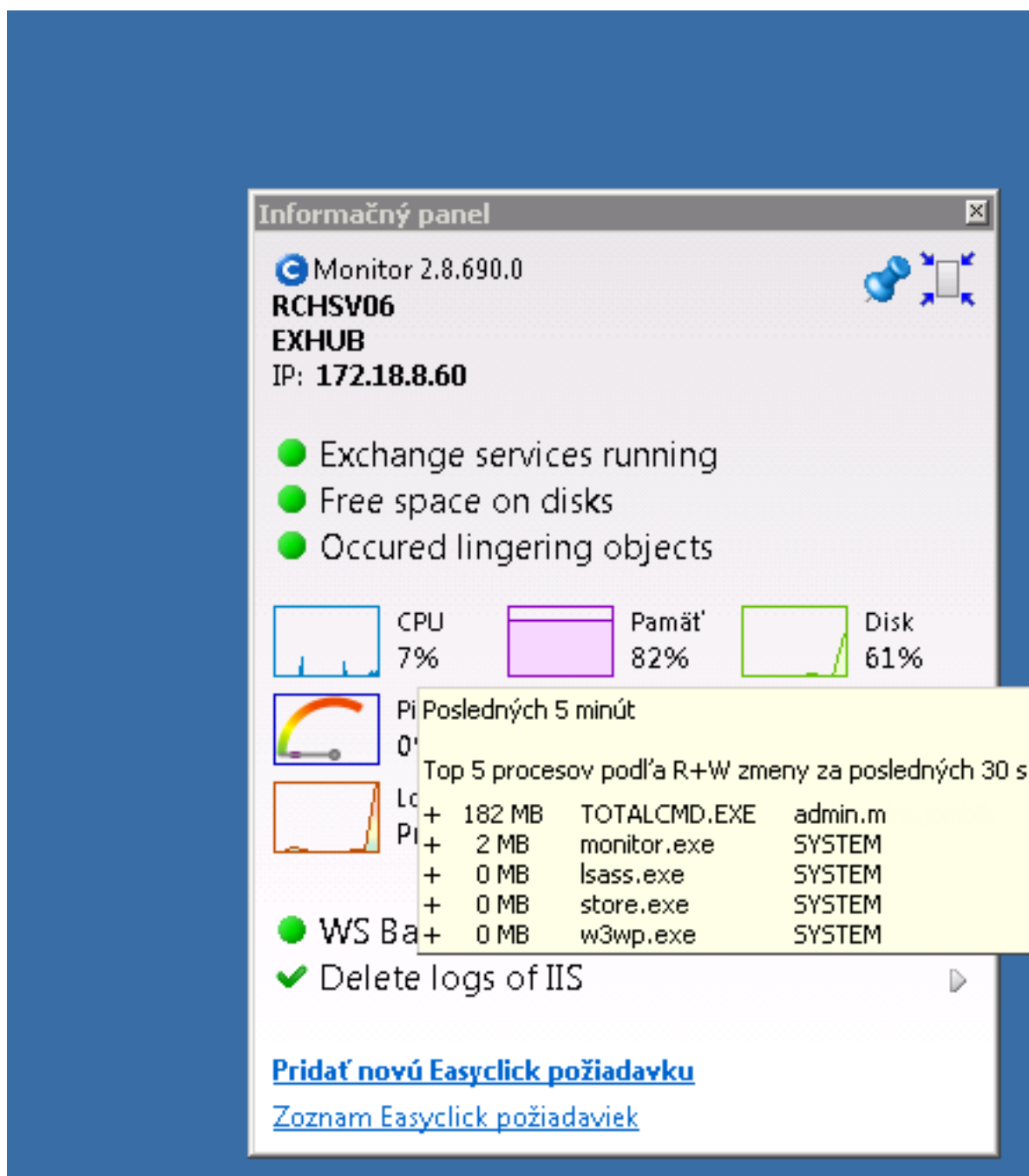


Image: Určenie procesov, ktoré najviac zaťažujú pevný disk

Historic overview, which processes most loaded the drive:

Open directly on the computer C-MonitorConsole -> SystemInfo, search the sample (time) in the top right corner of the screen, and sort the process output according to R+W change. This way you can get a quick overview of processes, which most burdened the drive at that time.

The screenshot displays the C-Monitor Console interface. On the left, a sidebar contains navigation options: Settings, Scheduler, Watches, Events Collector, C-Monitor Runtime Information's, History, and Modules logs. The main window is divided into two panes. The top pane, titled 'System Info', shows a table of system metrics including Date Time, Description, CPUUsage, MemoryUsage, MemoryPhysTotal, MemoryPhysUsed, PageFileTotal, PageFileUsed, DiskUsage, DiskLogReadQueue, and DiskLogWriteQueue. The bottom pane, titled 'Running Processes', shows a table of running processes with columns for PID, Name, CPU, Private, User, and Path. A red arrow points to the 'svchost.exe' process in the 'Running Processes' table, which is highlighted in blue. Another red arrow points to the 'History' section in the sidebar.

Date Time	Description
2015.02.23 18:00:57.787	System Info
2015.02.23 18:00:27.786	System Info
2015.02.23 17:59:57.786	System Info
2015.02.23 17:59:27.786	System Info
2015.02.23 17:58:57.785	System Info
2015.02.23 17:58:27.785	System Info

PID	Name	CPU	Private	User	Path
60	svchost.exe	12.0	1024	SYSTEM	C:\Program Files\...
61	svchost.exe	12.0	1024	SYSTEM	C:\Program Files\...
207	svchost.exe	12.0	1024	SYSTEM	C:\Program Files\...
1	svchost.exe	12.0	1024	SYSTEM	C:\Program Files\...
51654	svchost.exe	12.0	1024	SYSTEM	C:\Program Files\...
10	svchost.exe	12.0	1024	SYSTEM	C:\Program Files\...
4636	svchost.exe	12.0	1024	SYSTEM	C:\Program Files\...
100	svchost.exe	12.0	1024	SYSTEM	C:\Program Files\...
210	svchost.exe	12.0	1024	SYSTEM	C:\Program Files\...
100	svchost.exe	12.0	1024	SYSTEM	C:\Program Files\...
11	svchost.exe	12.0	1024	SYSTEM	C:\Program Files\...
1	svchost.exe	12.0	1024	SYSTEM	C:\Program Files\...
0	svchost.exe	12.0	1024	SYSTEM	C:\Program Files\...
0	svchost.exe	12.0	1024	SYSTEM	C:\Program Files\...
12204	svchost.exe	12.0	1024	SYSTEM	C:\Program Files\...

Image: Rýchly prehľad o procesoch, ktoré najviac zaťažovali pevný disk

Unveiled meaning of svchost.exe and similar processes:

It often occurs to administrators, that they encounter the system process svchost.exe or lsass.exe, or another one, which represents one or more services. To find out which service is hidden behind this process, you would need an additional application. With C-Monitor 2.8. it is no longer necessary, designation along with archivation for a few days back is secured from this version onwards. You can get to the details of the processes svchost.exe, lsass.exe through C-MonitorConsole on the computer, in the section System info.

After searching/filtering/selecting a certain time sample, find svchost.exe and continue by moving right in the bottom window, until you get to the column "Service". Here is a list of services bound to the given system process.

The screenshot displays the C-Monitor WIN client interface. The left sidebar contains navigation options: Settings, Scheduler, Watches, Events Collector, C-Monitor Runtime Information's, Emails, History, and Modules logs. The main window is titled 'System Info' and shows a list of system information entries. Below this, there is a 'Summary' section with tabs for 'Test' and 'Test Scores'. The 'Test' tab is selected, showing a 'System Info' section with various system metrics. At the bottom, there is a 'Running Processes' table with columns for CPU, CPU Time, Memory, Min Mem, Read+Write, RW change, and ESE name. The table lists several processes, including 'svchost.exe', 'TOTALCMD.exe', 'lsass.exe', 'Microsoft.Exchange', 'store.exe', 'inetinfo.exe', 'monitor.exe', 'certutil.exe', 'vncviewer.exe', 'Microsoft.Exchange', and 'svchost.exe'. Red arrows point from the 'svchost.exe' entries in the table to the 'System Info' section above.

CPU	CPU Time	Memory	Min Mem	Read+Write	RW change	ESE name
2%	0:00:39	11 MB	14 MB	1224 KB-3M	458 KB	svchost.exe
0%	0:00:01	13 MB	13 MB	68 KB-3M	432 KB	TOTALCMD.exe
0%	0:25:53	43 MB	82 MB	15027 KB-3M		lsass.exe
0%	0:01:01	382 MB	143 MB	97 KB-3M		Microsoft.Exchange
0%	0:00:01	32 MB	46 MB	1 KB-3M		store.exe
0%	1:34:29	5476 MB	4571 MB	510655 KB-3M		inetinfo.exe
0%	0:01:03	18 MB	28 MB	1 KB-3M		monitor.exe
0%	0:00:00	12 MB	12 MB	0 KB-3M		certutil.exe
0%	0:00:00	8 MB	10 MB	0 KB-3M		vncviewer.exe
0%	0:00:00	4 MB	12 MB	0 KB-3M		Microsoft.Exchange
0%	0:04:54	28 MB	48 MB	0 KB-3M		svchost.exe
0%	0:00:00	9 MB	9 MB	0 KB-3M		svchost.exe

Image: Zobrazenie systémových služieb obsluhovaných procesmi svchost a lsass

Date:

02/24/2015Version:

2.8.690.0