

C-EventLogConsole is a tool for viewing and searching events. Its function is similar to the Event Viewer tool, which is a component of management tools. The application loads a list of all events of a chosen type, and based on the user-entered condition (script), searches the list for all events that meet the given condition. The obtained "list of found events" can be viewed, or eventually saved in several formats. The tool works in interactive mode with user interface, or in non-interactive mode, based on the command line parameters

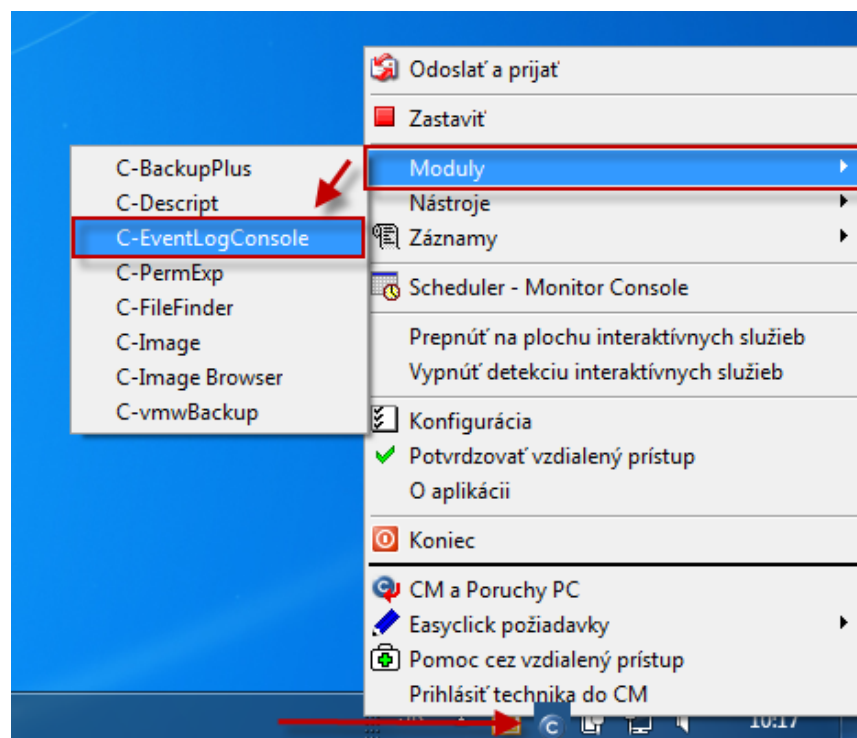
### [Creation of settings \(script\)](#)

### [Creation of scheduled task](#)

## Creation of settings (skript)

Before scheduling a periodic task for monitoring of events in the eventlog, first you have to configure its settings, i.e. you choose rules, so that you'll only see required events.

Begin the setup by launching the module C-EventLogConsole, as you can see on the next image.



In the new window, select Eventlog of that area, which you want to view; we've chosen the EventLog of applications in our case.

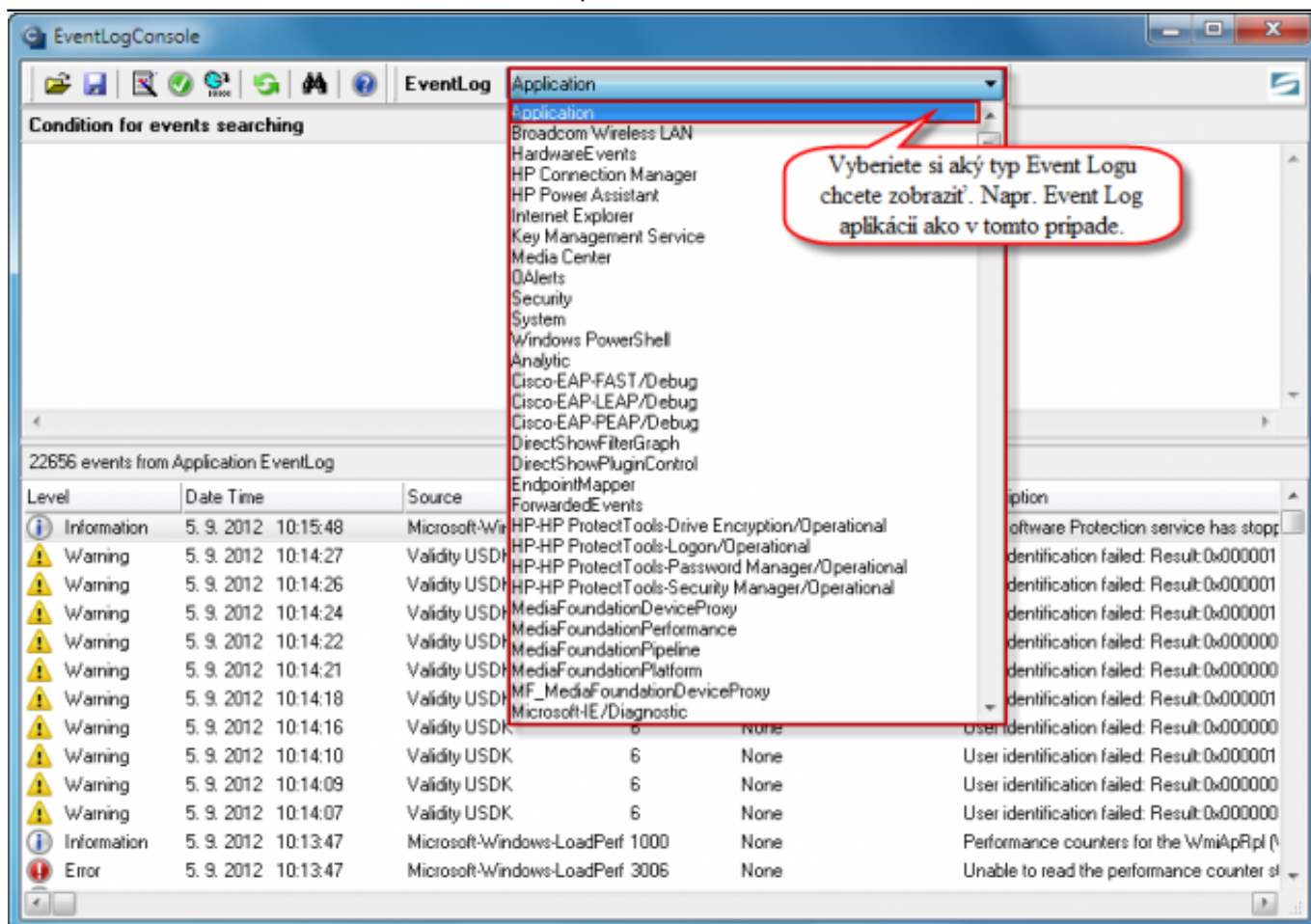


Image: Zvolíte si typ udalostí, ktoré chcete aby sa vám vylisovali

To search for a specific type of event, you must define conditions. They are added using the wizard, as you can see on the next image.

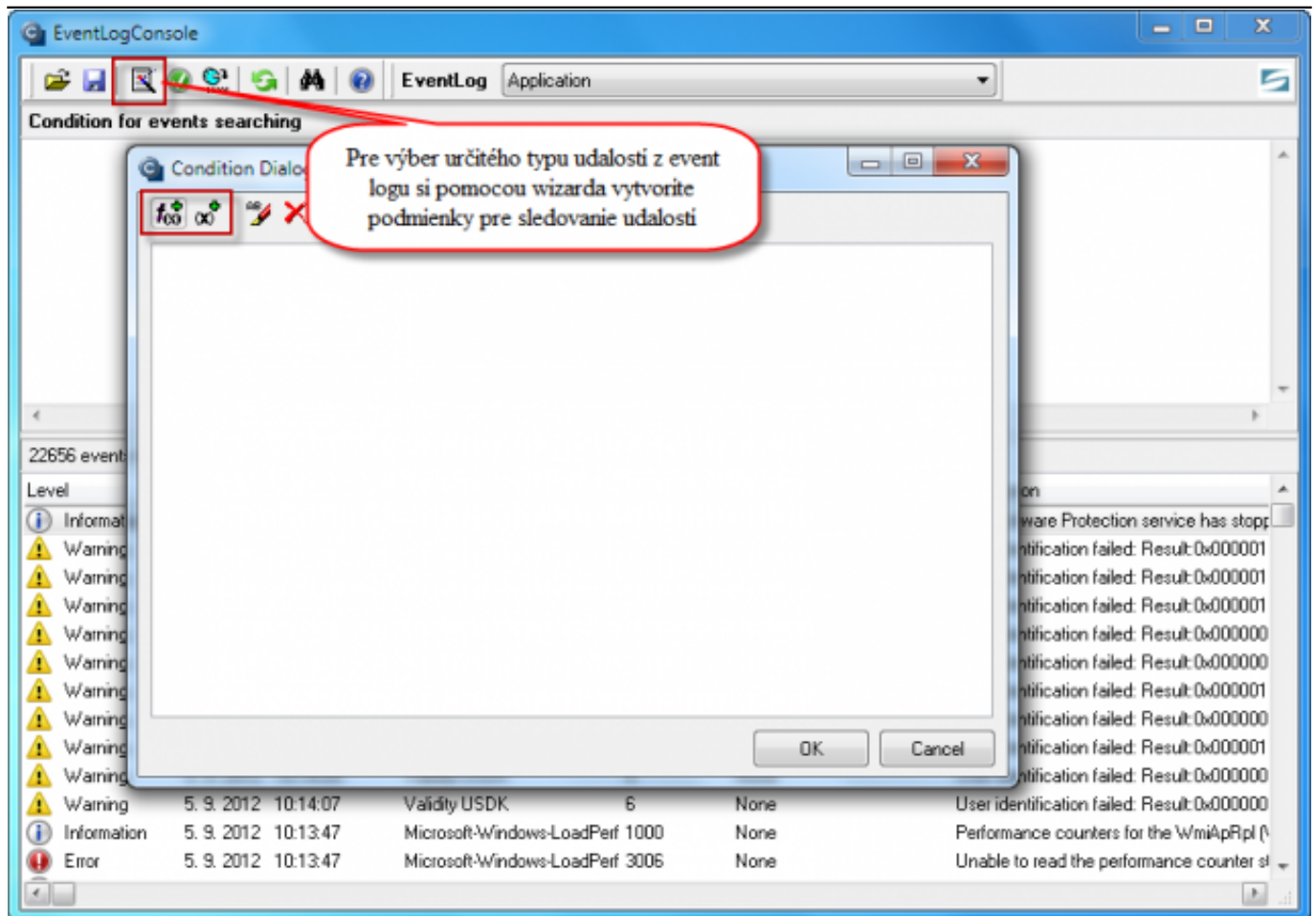


Image: Pomocou sprievodcu si zadefinujete podmienky (filter) pre zobrazenie len vybraných udalostí z event logu

By clicking on the button shown in the next image, you'll see a window in which you can choose from a list of prepared conditions.

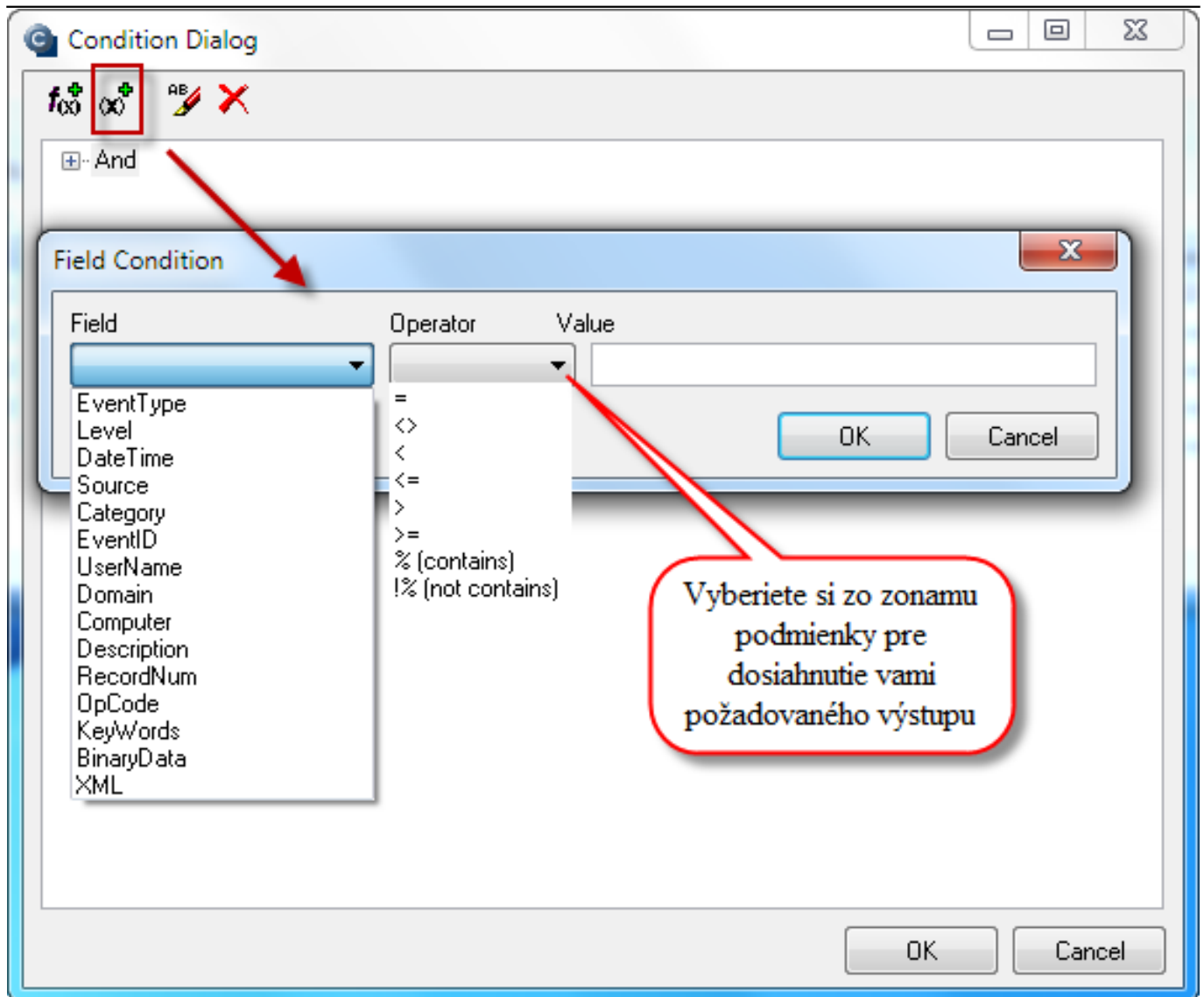


Image: Zvolíte si požadované podmienky zobrazenia

For easier understanding, we've given an example for searching only events of the type Application Hang - on the next image is a condition that will look for all events, which contain the word "Hang" in the column *Source*.

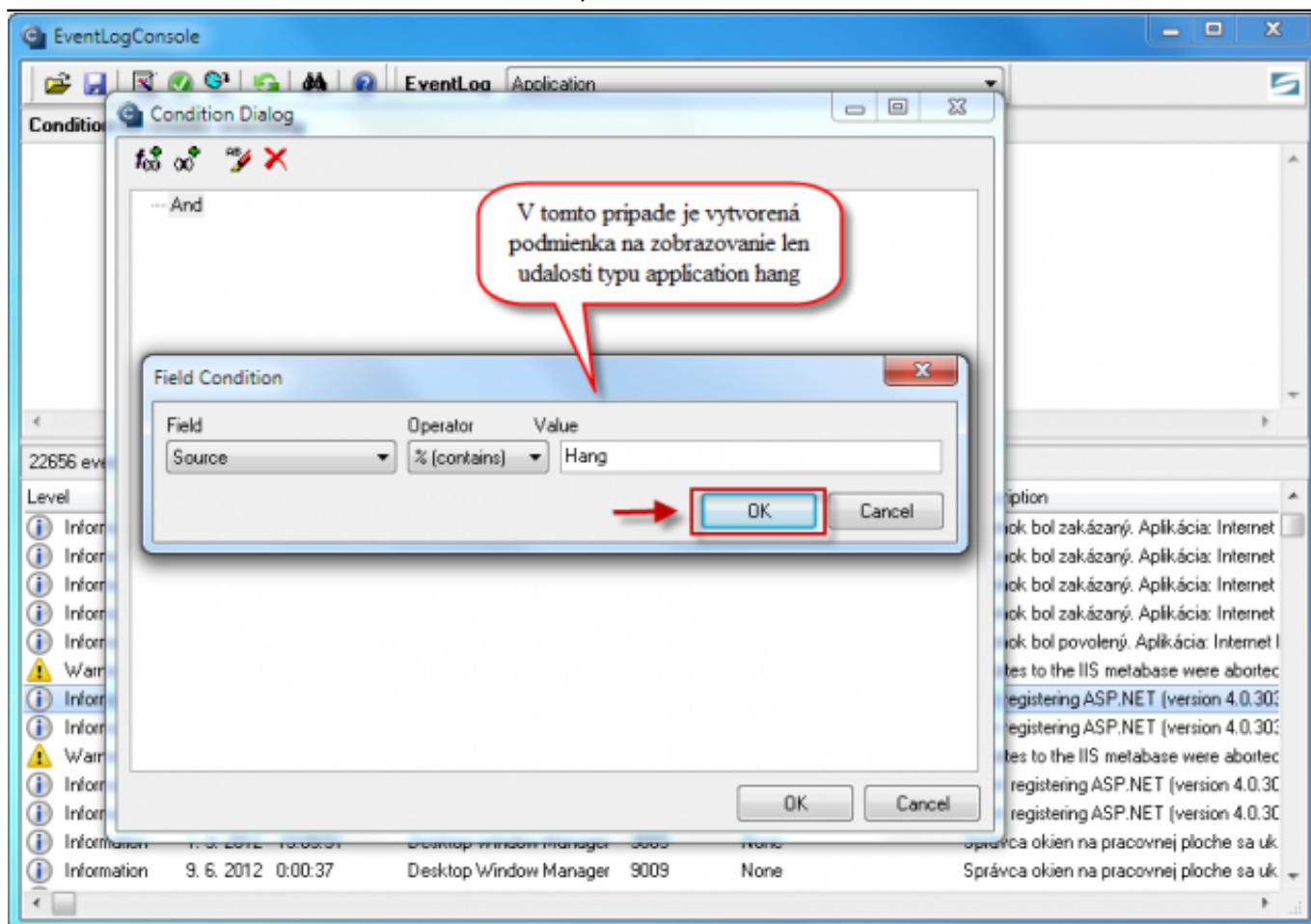


Image: Príklad pre zobrazenie len eventov typu application hang

After confirming the created conditions, press the button marked with number 1 on the next image to only view Events according to the predefined conditions - as you can see, only events of the type *Application Hang* were displayed on the bottom in our case. When you've confirmed that only required events are displayed, press button no. 2, and save your settings with the option *Save Conditions*.

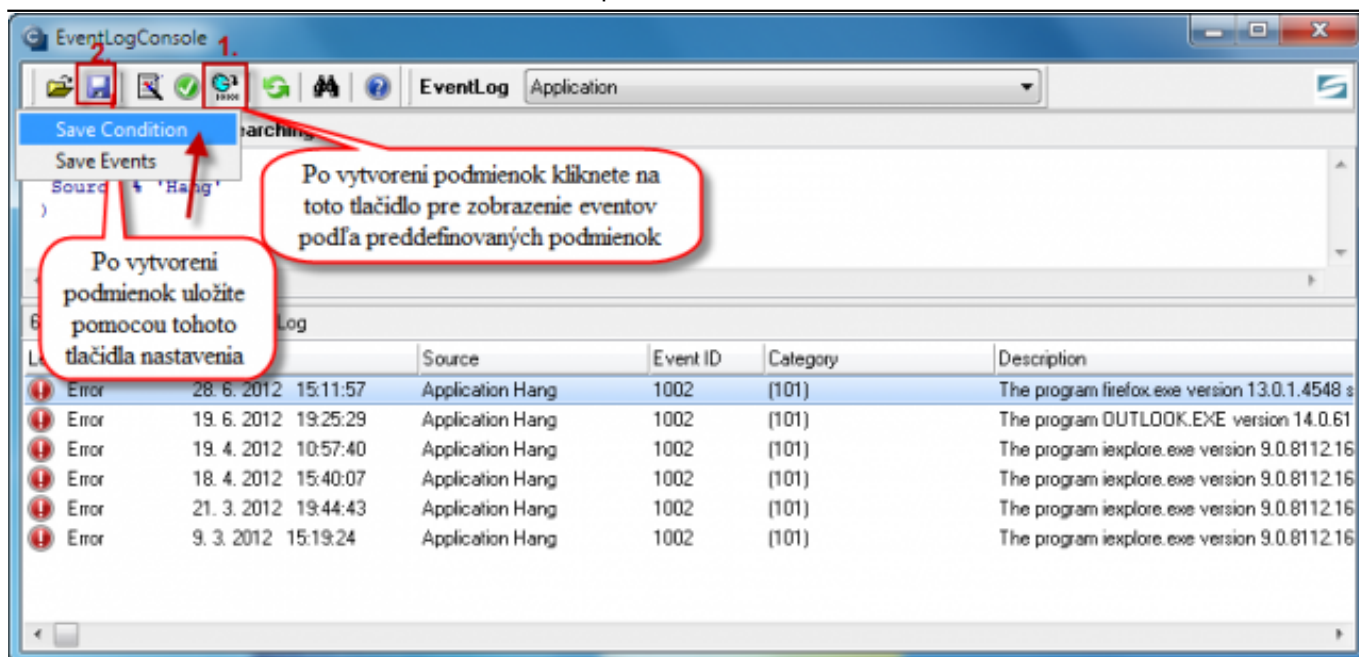


Image: Zobrazenie eventov podľa preddefinovaných podmienok + uloženie nastavení

The process of settings creation is now ended, so you may continue by creating a periodic task.

## Creation of scheduled task

A new periodic task is created after entering to Scheduler-MonitorConsole through tray menu of the C-Monitor icon, as displayed on the next image.

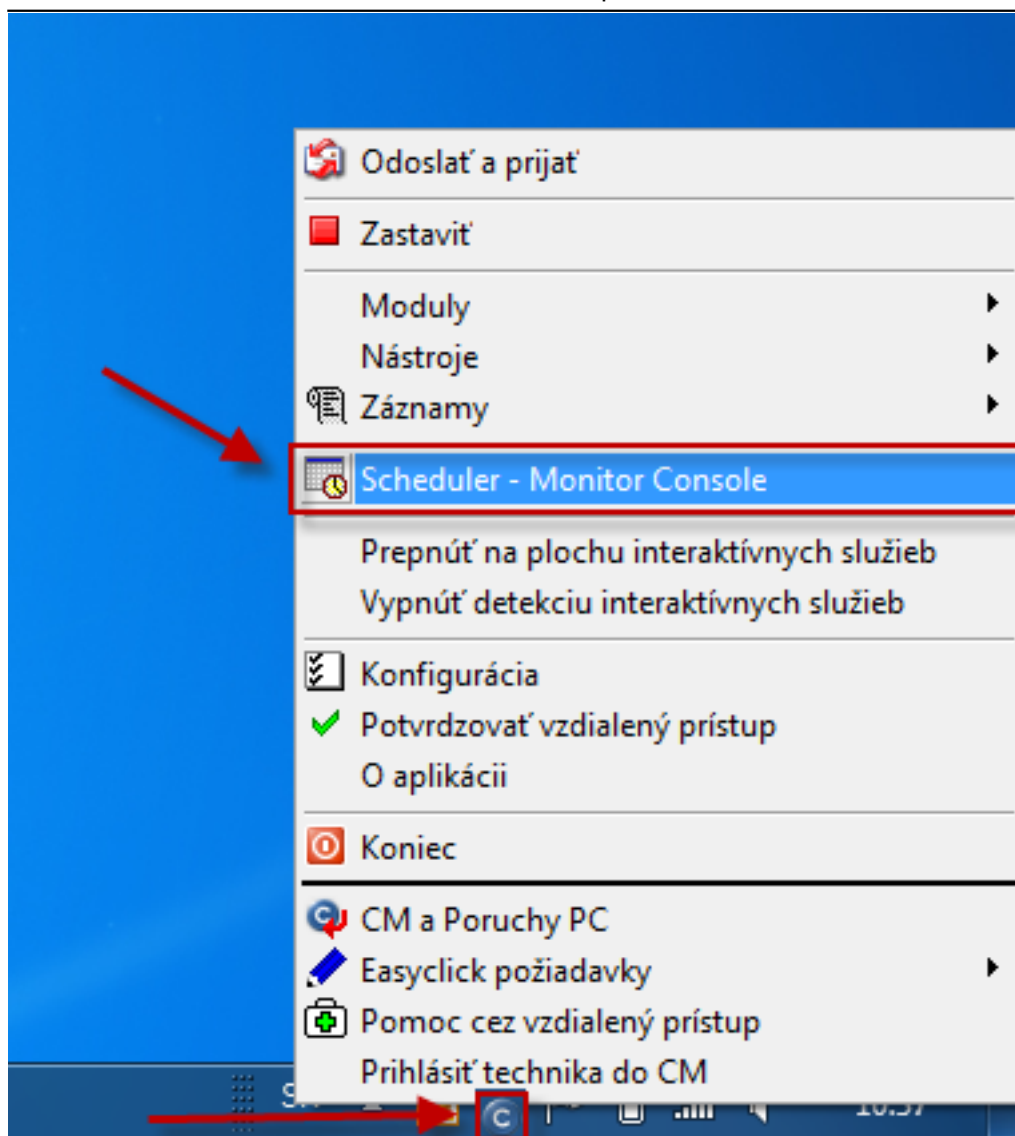


Image: Vstup do schedulera pre pridanie pravidelnej úlohy

Execution of the wizard for scheduling of *Process Events with C-EventLogConsole* is illustrated on the following image.



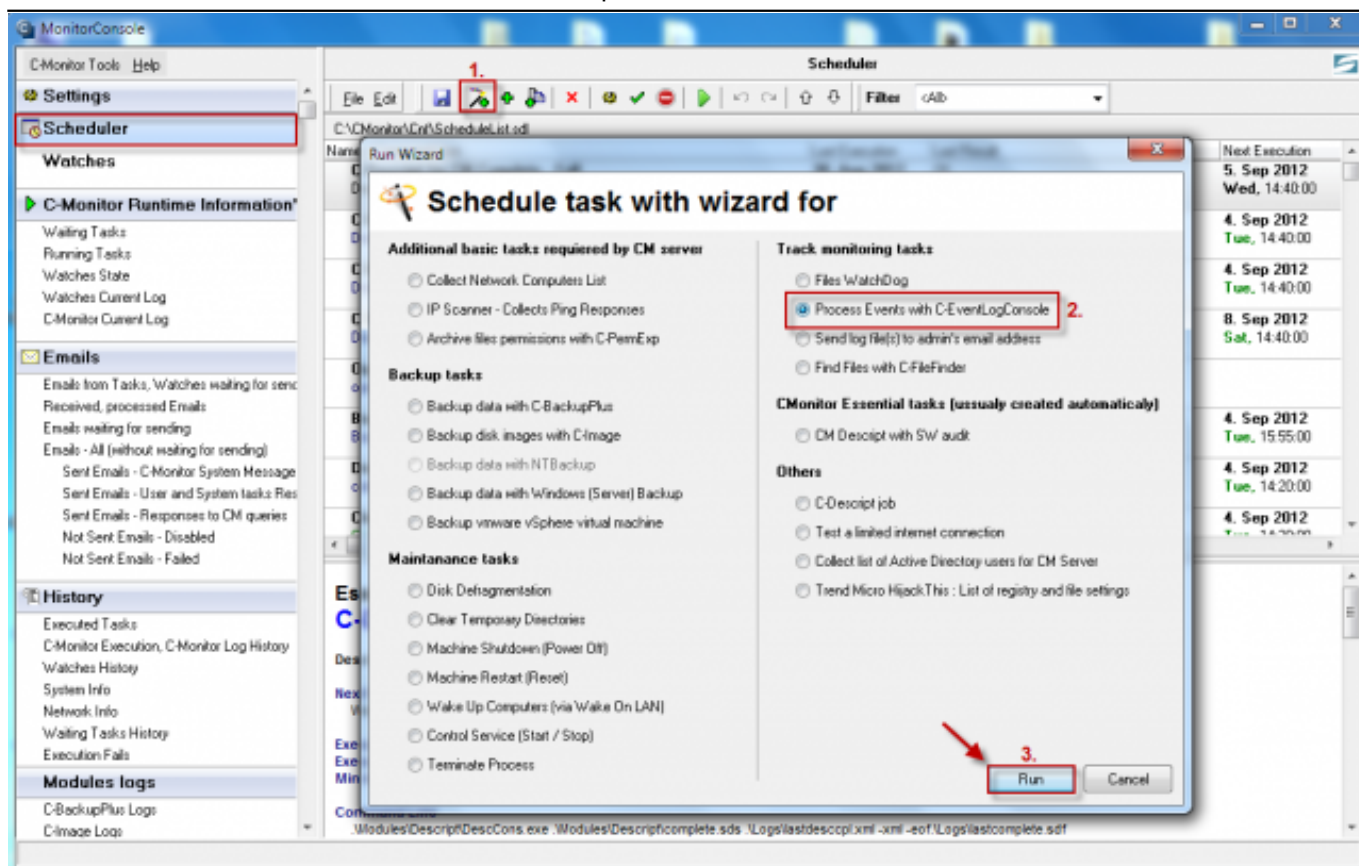
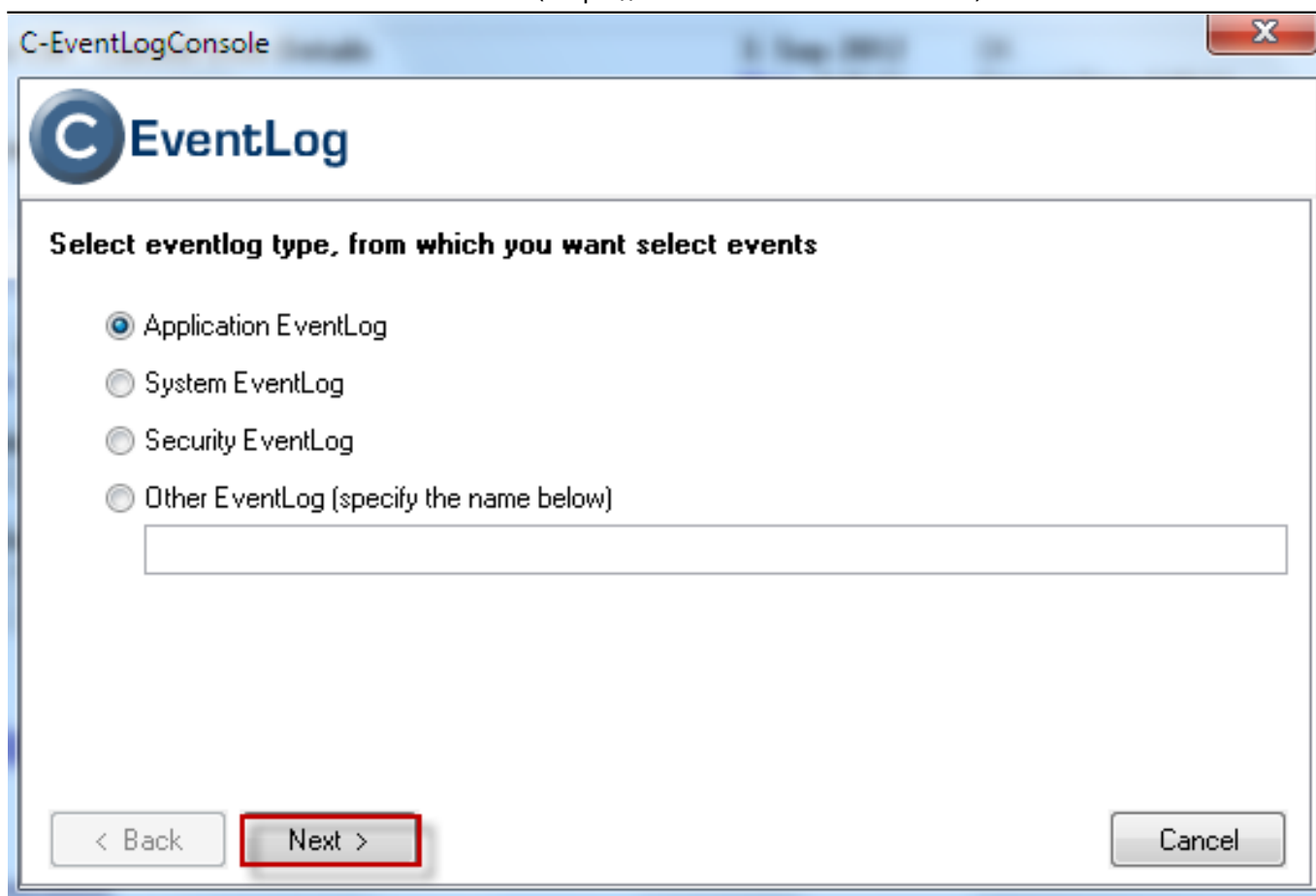


Image: Vytvorenie pravidelnej úlohy cez C-Monitor tray ikonku

Select type of Event, e.g. for monitoring of Application Hang events, select the option Application EventLog.





The screenshot shows a window titled "C-EventLogConsole" with a close button in the top right corner. Inside the window, there is a header with the "C" logo and the text "EventLog". Below the header, the instruction "Select eventlog type, from which you want select events" is displayed. There are four radio button options: "Application EventLog" (which is selected), "System EventLog", "Security EventLog", and "Other EventLog (specify the name below)". Below the "Other EventLog" option is an empty text input field. At the bottom of the window, there are three buttons: "< Back", "Next >" (which is highlighted with a red border), and "Cancel".

Image: Výber typu Eventlogu

In the next window, insert the file with settings, which you've created according to the previous part of this article.

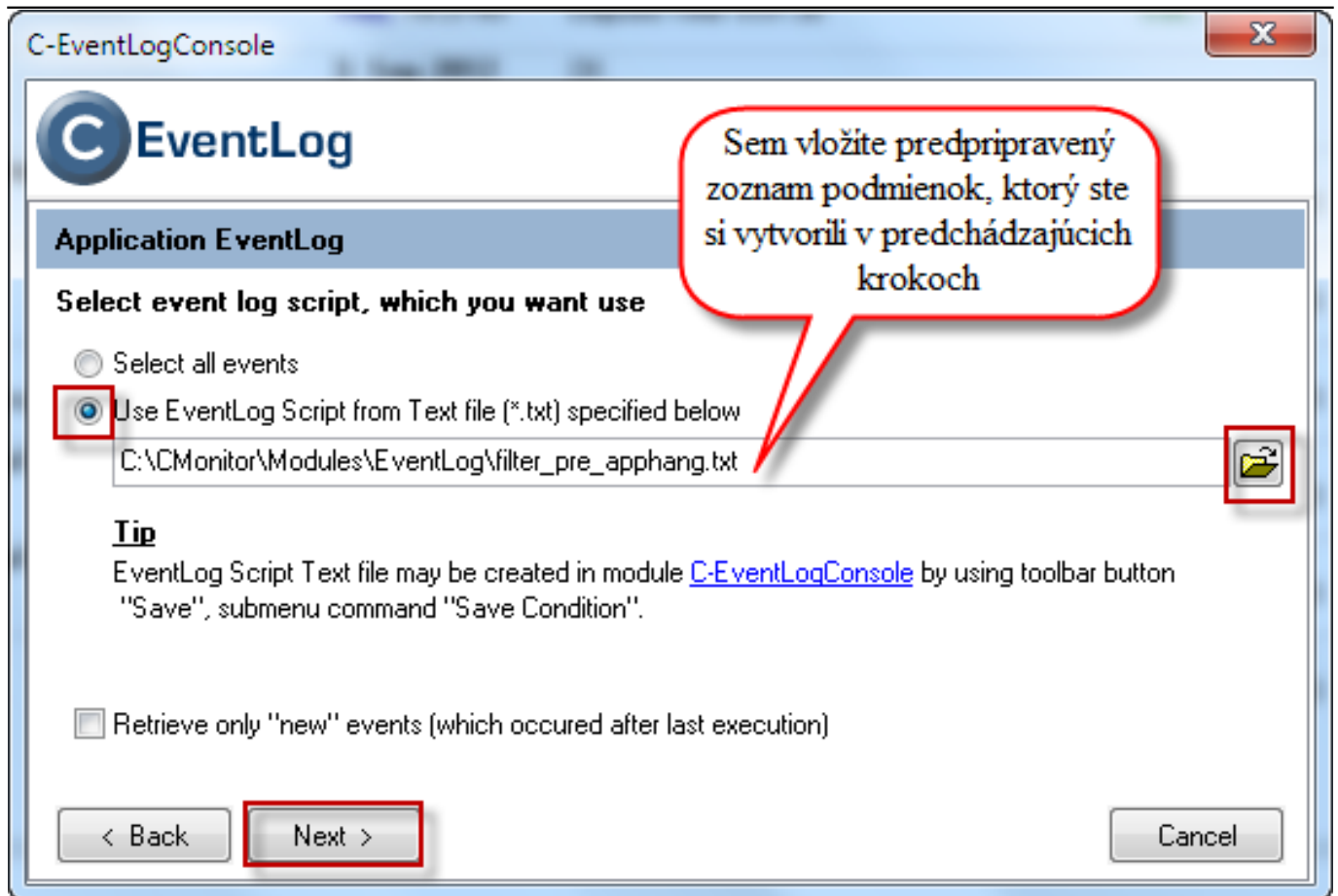


Image: Sem vložíte nastavenia, ktoré ste si vytvorili a uložili v predchádzajúcich krokoch

In the window shown on the next image, you have an option to send selected events on email.

The screenshot shows the 'C-EventLogConsole' window. It has a title bar with a close button. Inside, there's a header bar with a logo and the text 'C-EventLogConsole'. Below this, there's a section with a blue header bar containing the text 'Aplikačné udalosti'. The main area contains a checkbox labeled 'Send output file to custom E-Mail address' which is checked. To the right of this checkbox is a green circular icon with a white arrow. Below the checkbox are three text input fields: 'From:' with the value 'eventlog@hangaplikacie.sk', 'To:' with the value 'vasemail@email.sk', and 'Subject:' with the value 'Eventlog -Hang aplikácie'. Below these fields is a large empty text area. At the bottom, there's a 'Note' section stating 'E-Mail will be send via CM Server (http transfer to CM). Max 2 MB.' and three buttons: '< Back', 'Next >', and 'Cancel'. Two red speech bubbles are overlaid on the image. The first bubble points to the 'To:' field and contains the text 'Adresa odosielaťa môže byť ľubovoľná'. The second bubble points to the 'Send output file to custom E-Mail address' checkbox and contains the text 'Nastavenie zasielania eventlogu na vami zadany email'.

Adresa odosielaťa môže byť ľubovoľná

Nastavenie zasielania eventlogu na vami zadany email

☒ Send output file to custom E-Mail address

From: eventlog@hangaplikacie.sk

To: vasemail@email.sk

Subject: Eventlog -Hang aplikácie

**Note:** E-Mail will be send via CM Server (http transfer to CM). Max 2 MB.

< Back    Next >    Cancel

Image: Možnosť nastavenia posielanie eventlogu s typom udalosti application hang na email

You should then choose a time interval of the task's execution, the image shows a 5 minute interval.

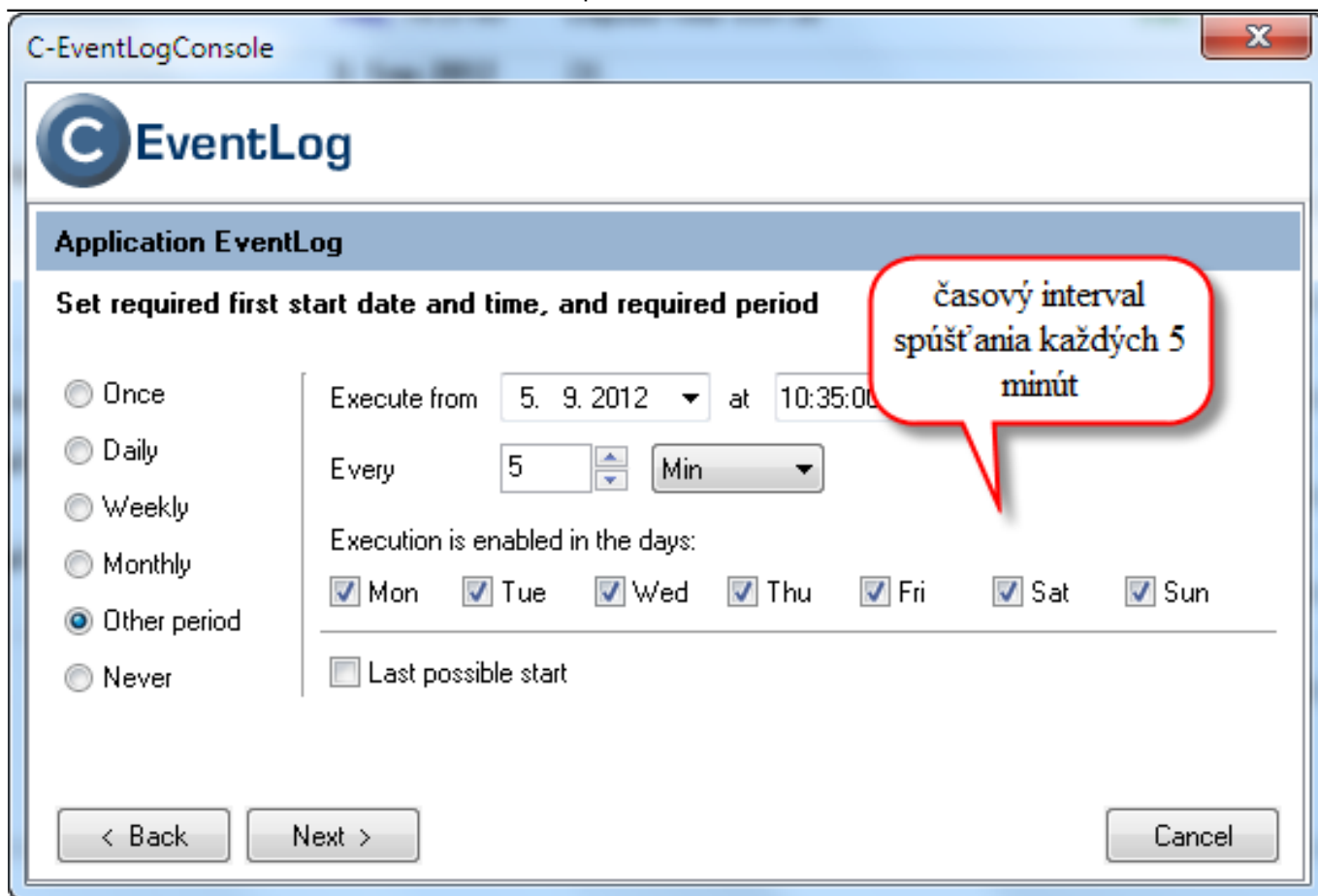


Image: Nastavenie periódy spúšťania úlohy, v tomto prípade každých 5 minút

After the scheduled task's first execution, you'll receive an email with all application hang events. You won't receive another email until a new event of the type application hang is found.

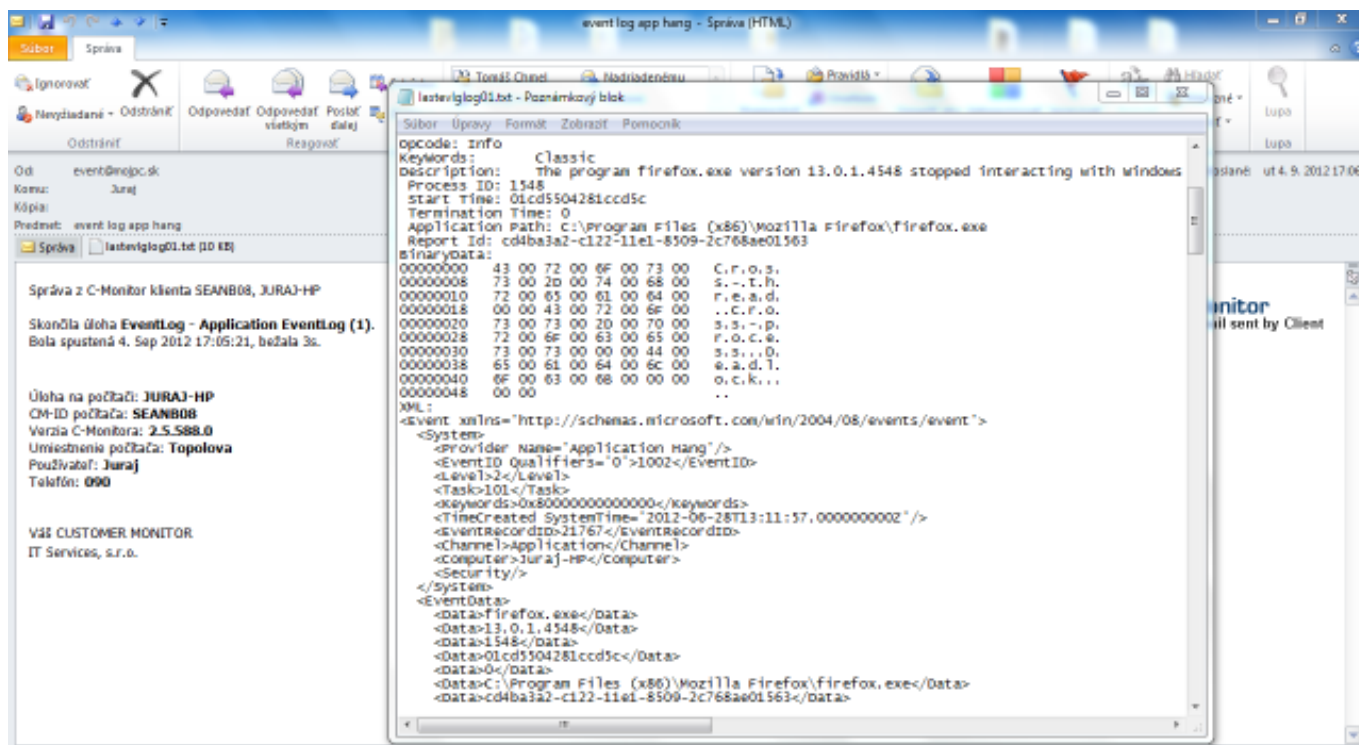
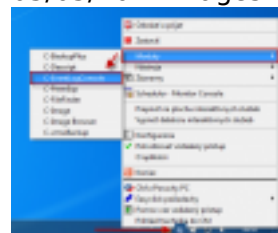


Image: Email odoslaný z C-Monitora zobrazujúci podrobné informácie a application hang udalostiach z event logu

Date:

03/03/2012



[1]



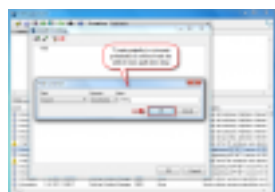
[2]



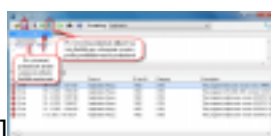
[3]



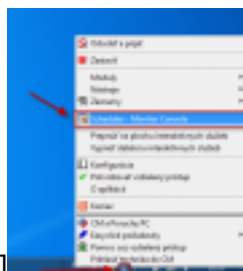
[4]



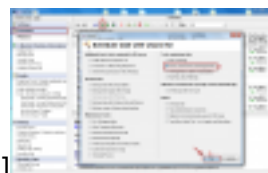
[5]



[6]



[7]



[8]



[9]



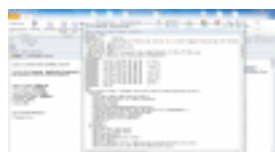
[10]



[11]



[12]



[13]

## Links

[1] <https://www.customermonitor.eu/sites/default/files/vstup%20do%20eventlog%20console.png>

[2] <https://www.customermonitor.eu/sites/default/files/eventlogconsole1.png>

[3] <https://www.customermonitor.eu/sites/default/files/pridanie%20podmienok1.png>

[4] [https://www.customermonitor.eu/sites/default/files/podmienky\\_0.png](https://www.customermonitor.eu/sites/default/files/podmienky_0.png)

[5] [https://www.customermonitor.eu/sites/default/files/pridanie%20podmienky2\\_0.png](https://www.customermonitor.eu/sites/default/files/pridanie%20podmienky2_0.png)

[6] <https://www.customermonitor.eu/sites/default/files/pridanie%20podmienky3.png>

[7] <https://www.customermonitor.eu/sites/default/files/vstup%20do%20schedulera.png>

[8] <https://www.customermonitor.eu/sites/default/files/pridanie%20ulohy%20cez%20scheduler.png>

[9] [https://www.customermonitor.eu/sites/default/files/2\\_28.png](https://www.customermonitor.eu/sites/default/files/2_28.png)

[10] [https://www.customermonitor.eu/sites/default/files/3\\_21.png](https://www.customermonitor.eu/sites/default/files/3_21.png)

[11] <https://www.customermonitor.eu/sites/default/files/posielanie%20na%20email.png>

[12] <https://www.customermonitor.eu/sites/default/files/perioda%20spustania.png>

[13] <https://www.customermonitor.eu/sites/default/files/email.png>