

C-Monitor creates a record of all important events it has processed during its operation, which are for instance: Requests sent from CM portal, it captures and displays the connection with CM portal - download and upload, record of executed tasks, it captures changes of Watches and completed actions from Watches.

C-Monitor Log may be viewed on several places, the options are described in the text below.

1. View via C-Monitor Console

Enter into Scheduler through C-Monitor icon's tray menu, and select C-Monitor Current Log from the options on the left, as is displayed on the next image.

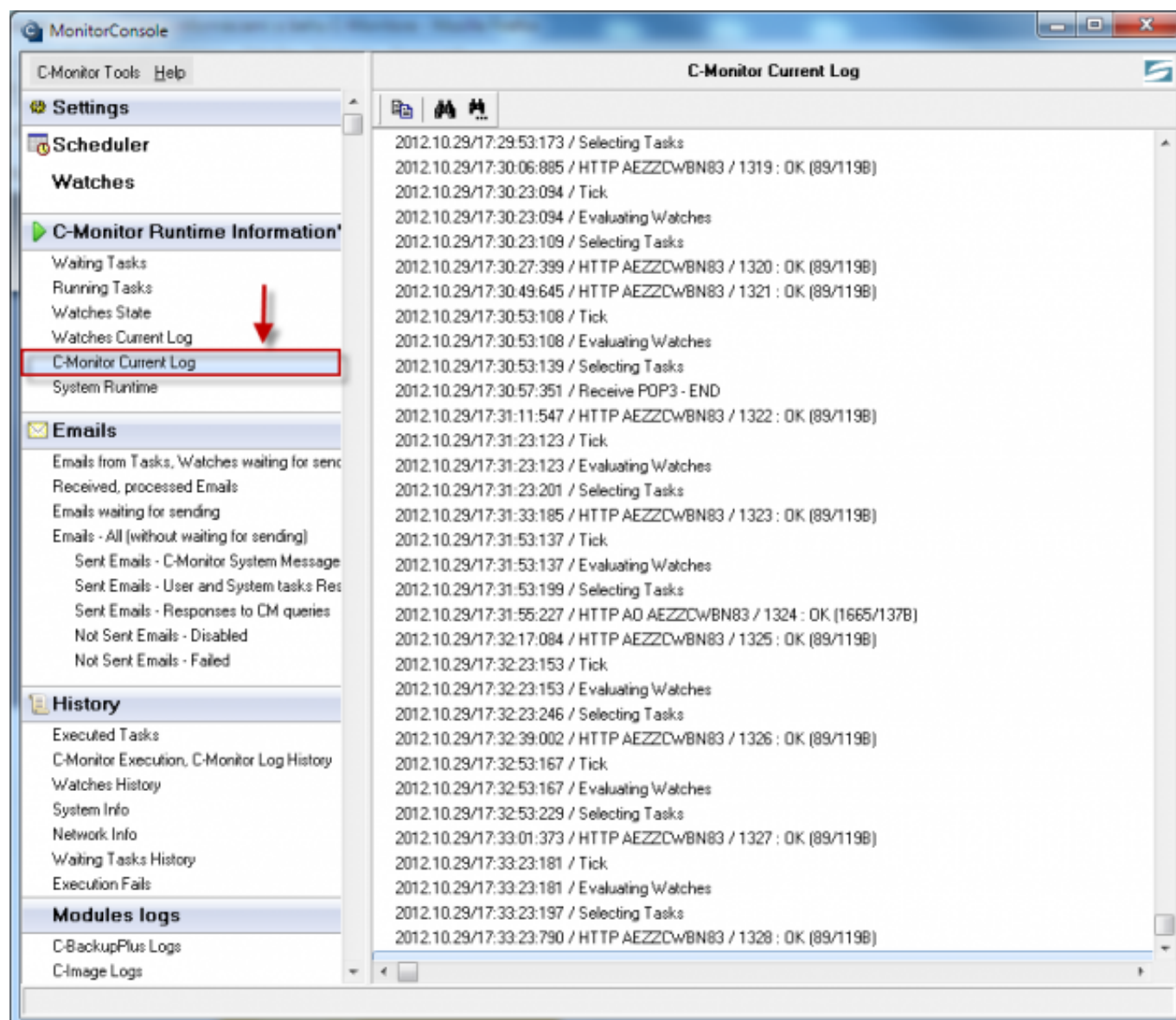
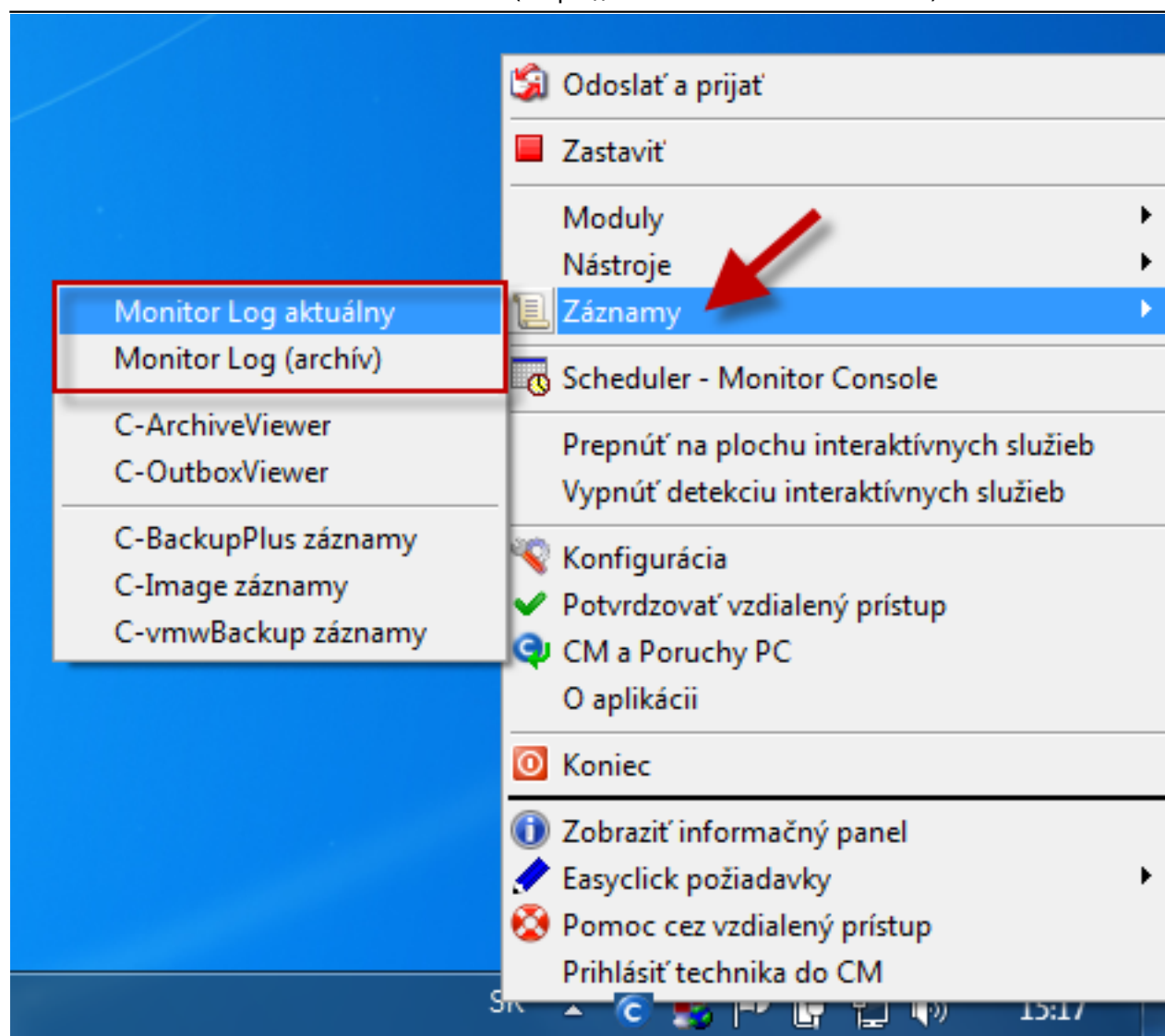


Image: C-Monitor Current Log zobrazený cez scheduler C-Monitor klienta

2. View via C-Monitor client - section Records

Select the option Records through C-Monitor icon's tray menu as displayed on the following image. By selecting *Monitor Log current*, you'll display C-Monitor Current Log for time period from launch of the C-Monitor client to the present. In case you want to view information from an older time period, select the option *Monitor Log (archive)*, the outputs are shown on the images below.



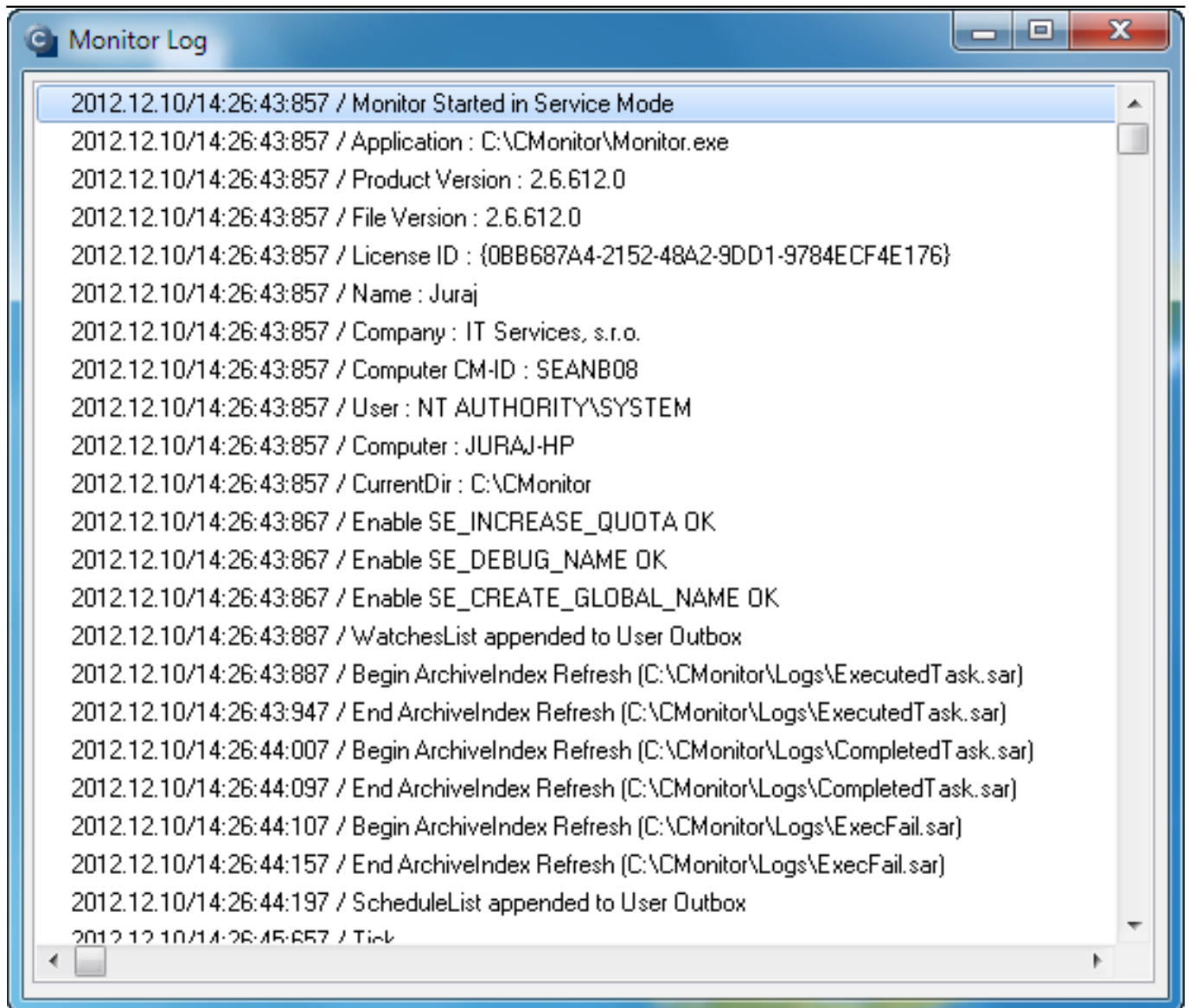


Image: Monitor Log aktuálny

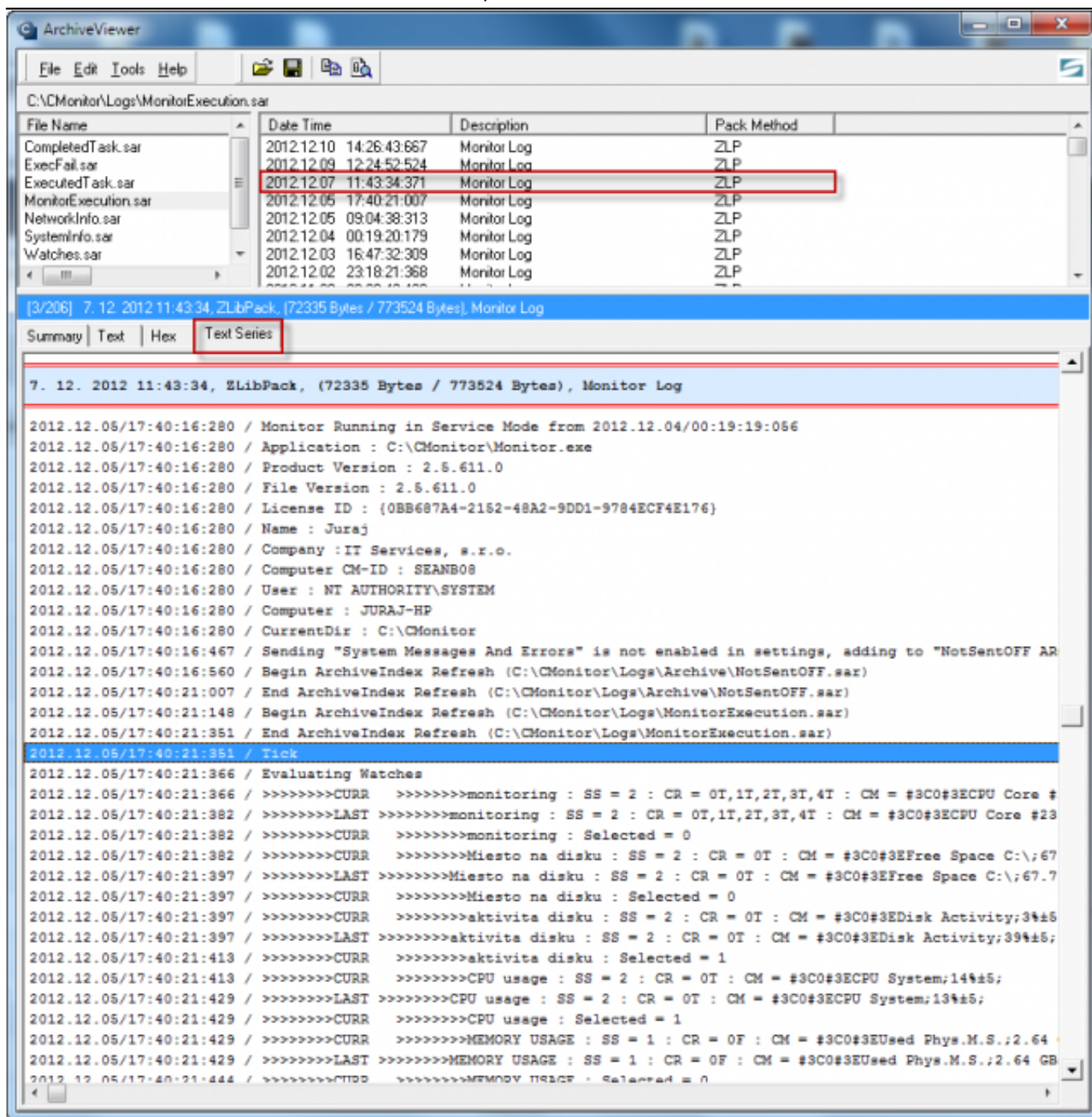


Image: Monitor Log (archív)

3. View via CM portal

You may also view C-Monitor Log via CM-portal for any device. Go to the section *Admin zone -> C-Monitor client -> Files downloaded from computers -> select concrete device(s) through the upper filter* and click on the button *C-Monitor Log from selected*, or on the button *C-Monitor Log*, as displayed on the following image.

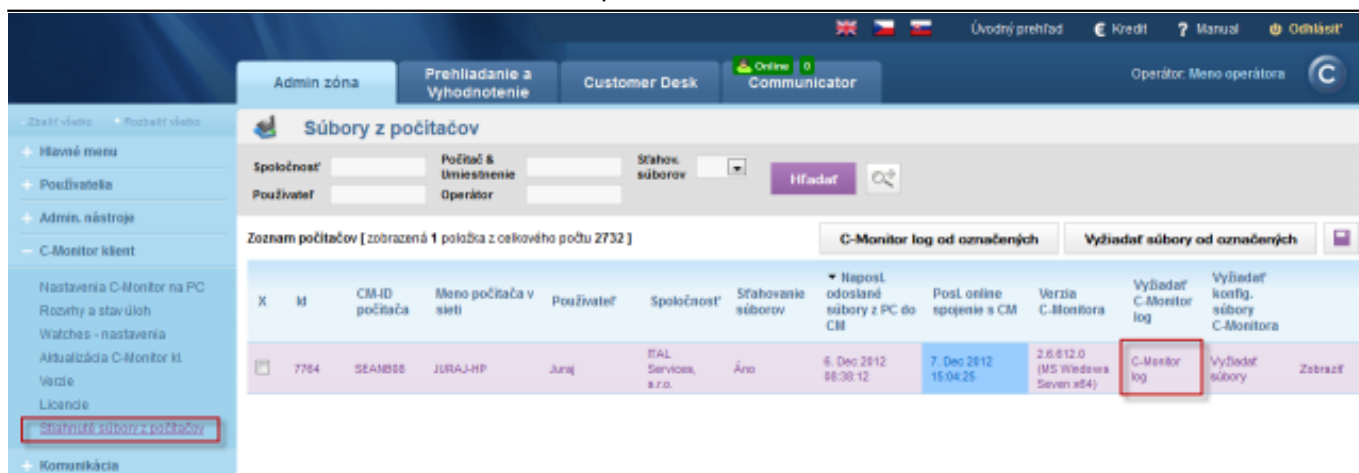


Image: Prístup k zobrazeniu C-Monitor Logu prostredníctvom CM portálu

In the next window, choose the time period for which you want the C-Monitor Log to be displayed, and press the button *Request*.

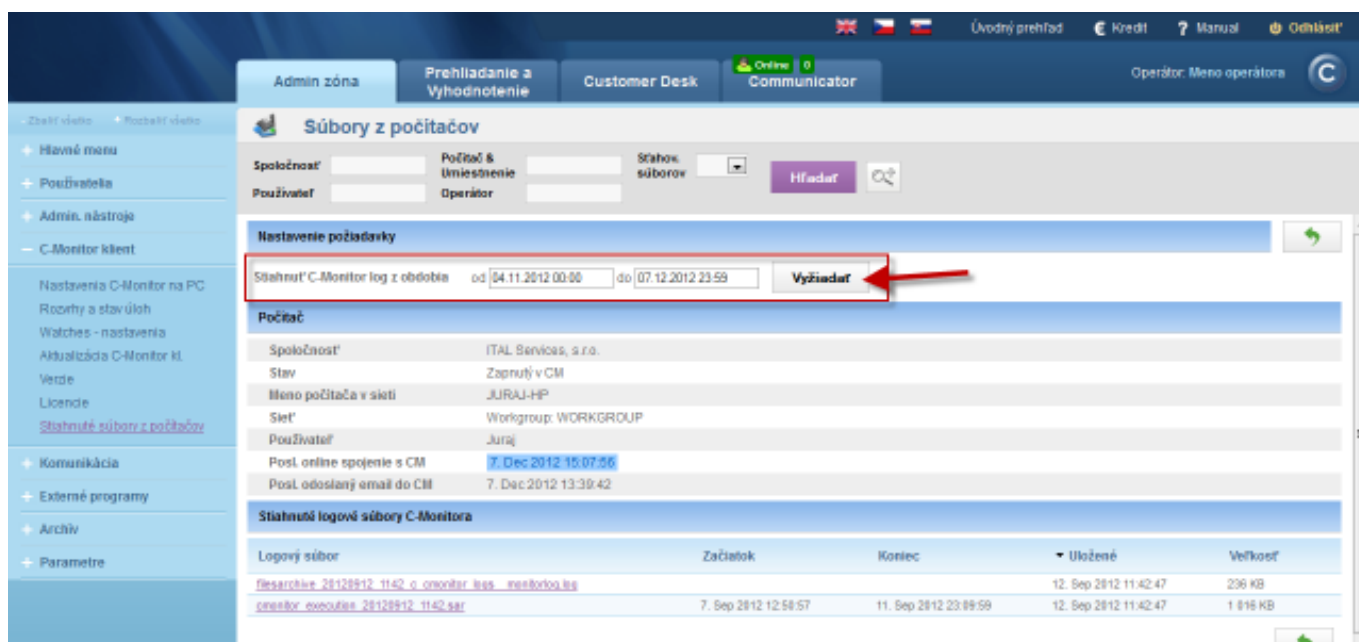


Image: Výber časového obdobia, ktoré chcete stiahnuť na CM portál

When the C-Monitor Log is successfully loaded, at the bottom you'll see two files marked with numbers 1 and 2 on the next image. The file marked with number 1 may be opened in a text editor as you can see on the image. The second file will open automatically via C-Monitor client, if it's installed.

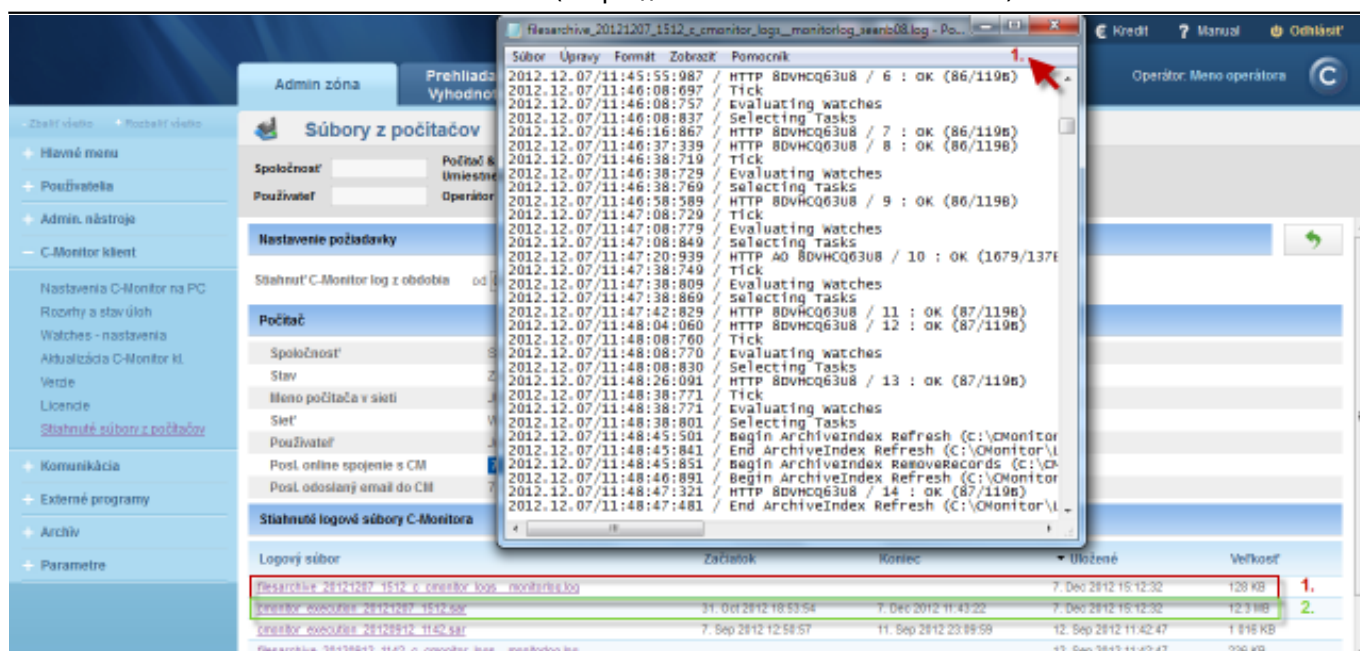


Image: Zobrazenie C-Monitor Logu

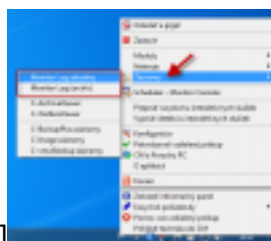
Date:

10/28/2012

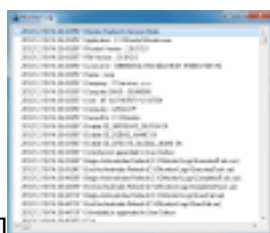
Images:



[1]



[2]



[3]



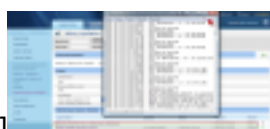
[4]



[5]



[6]



[7]

Links

[1] <https://www.customermonitor.eu/sites/default/files/c-monitor%20current%20log.png>

[2] <https://www.customermonitor.eu/sites/default/files/vstup%20do%20cmonitor%20logu%20zo%20znamov.png>

[3] <https://www.customermonitor.eu/sites/default/files/cmonlog.png>

[4] <https://www.customermonitor.eu/sites/default/files/cmonitor%20current%20log%20-%20vystup%20z%20archivu%20zaznami.png>

[5] <https://www.customermonitor.eu/sites/default/files/vyziadanie%20cmonitor%20logu.png>

[6] <https://www.customermonitor.eu/sites/default/files/vyziadanie%20cmonitor%20logu2.png>

[7] https://www.customermonitor.eu/sites/default/files/cmonitor%20log_0.png