

The most burdening processes of CPU and RAM can be displayed in many places.

View of the most burdening processes of CPU, RAM in the section Online information

In the section *Presentation and Evaluation -> Presentation -> Online information* is displayed the current status and there are given two processes that load CPU and RAM the most among the highlighted lines with CPU and Memory processes, as shown on the next image. Based on this information, you can always tell, which processes are currently the most burdening for the device.

Logged users		User 1	Juraj-HPUnaj - ADMINISTRATOR
System usage	Cpu system usage	19 %	
	Cpu kernel usage	4 %	
	Memory usage	64 %	
	Disk activity	35 %	
	Disk avg read queue	0	
Processes by cpu	Process 1	firefox.exe (5.5%)	
	Process 2	C:\windows\System32\cmd.exe (4.4%)	
Processes by memory	Process 1	firefox.exe (428 MB)	
	Process 2	OUTLOOK.EXE (141 MB)	
Ping connection monitoring	Description	www.google.sk (12x in 3m)	
	Packet loss	10 %	
	Round trip time	217 ms	

Image: Online info na CM portáli - aktuálny stav a zvýraznenie riadkov s CPU, Memory procesmi

An example from table history of Online info and framing the columns with TOP processes.

Český výhled

Polský výhled

Upozornění

Poruchy

História porúch

Poruchy na počítačoch

Zobrazenia

Zóny

Watches (Online monitoring)

Počítače

Online informácie

Internet bandwidth monitor

Zmeny na počítačoch

Foto dokumentácia

Manažerské informácie

Reporty

Prenášané dáta na ADSL a FW

Admin zóna

Prehliadanie a Vyhodnotenie

Customer Desk

Online 0 Communicator

Operátor: Meno operátora

Online informácie

Spoločnosť

Operátor

OS

Počítač & Umiestnenie

Zoradiť podľa

☒ Zahrnúť ručne zadané počítače

zmarb08

CMHD

Zoradiť ako

Vstupne

☐ Len online počítače

Hľadať

Zóna Online informácie [zobrazená 1 položka]

Vstup do zobrazenia histórie z online informácií v tabuľkovej alebo grafickej forme

Sekcia	Parameter
	zmarb08
Show	History
Network Name	JURAJ-HP
User	Juraj
Current Login	Juraj-HPUnaj
Location	Topolova
Phone	
Online connection	23. Jan 2013 15:40:03
Remote Access	
Global ip	188.121.188.165
Computer uptime	0 days 05:30:00
Logged users	User 1 Juraj-HPUnaj - ADMINISTRATOR
System usage	Cpu system usage
	Cpu kernel usage

Image: Zobrazenie vstupu do histórie online informácií

The history is shown max 24 hours ago.

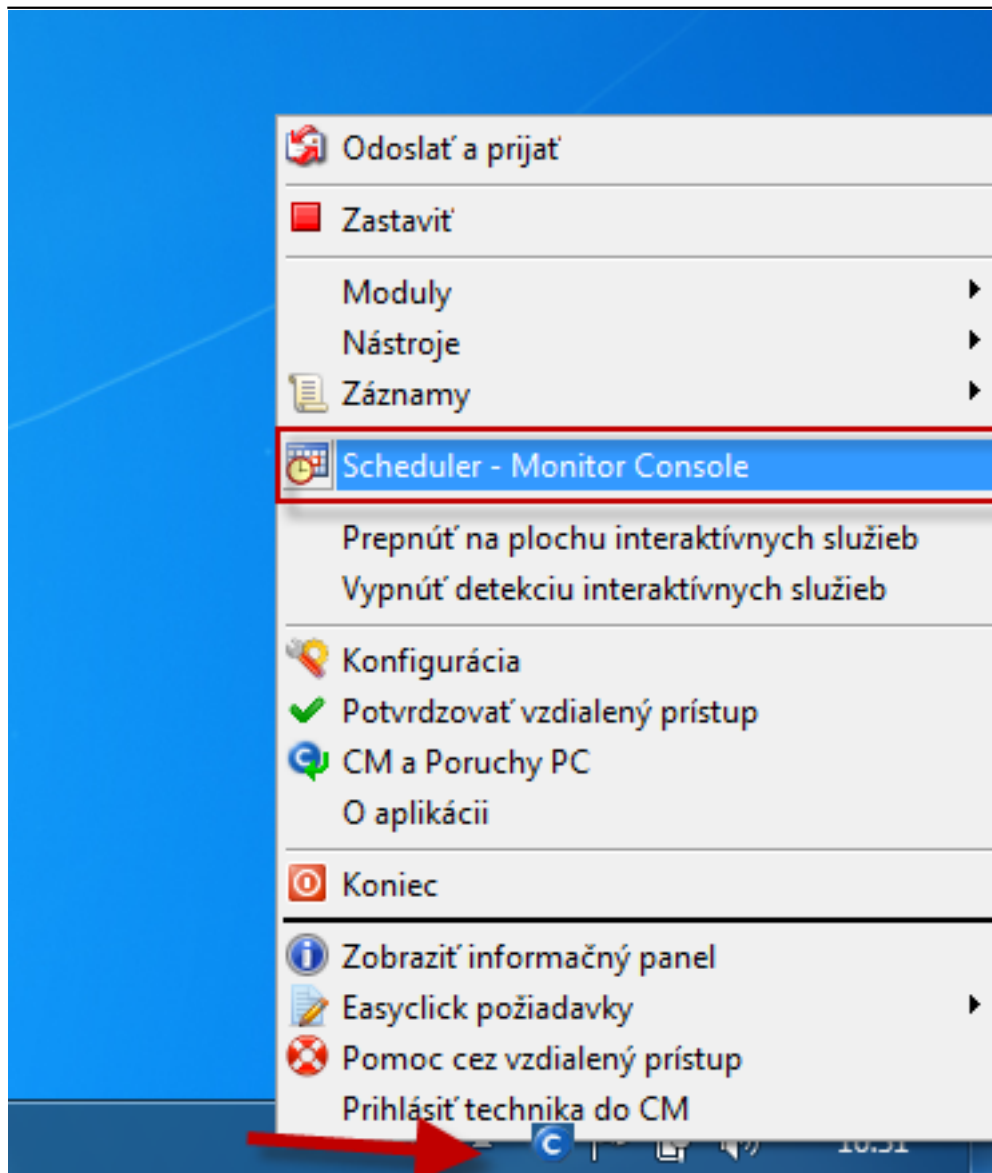
The screenshot displays the Customer Monitor web interface. The top navigation bar includes 'Admin zóna', 'Přehledání a Vyhodnotenie', 'Customer Desk', and 'Communicator'. The main content area is titled 'Zóny' and features a sidebar with navigation options like 'Úpravy', 'Upozornenia', 'Poruchy', 'Hlásenia porúch', 'Poruchy na počítačoch', 'Zobrazenia', 'Zóny', 'Watches (Online monitoring)', 'Počítače', 'Online informácie', 'Internet bandwidth monitor', 'Zmeny na počítač', 'Foto dokumentácia', 'Manažerské informácie', 'Reporty', and 'Prenasení dát na ADSL a FW'. The 'Online informácie' link is highlighted with a red box. The main table is divided into three sections: 'System usage', 'Processes by cpu', and 'Processes by memory'. The 'System usage' table shows CPU system usage (11%), CPU kernel usage (1%), Memory usage (62%), Disk activity (18%), Disk avg read queue (0), and Disk avg write queue (0). The 'Processes by cpu' table lists processes such as 'C:\Program Files (x86)\TechSmith\Snagit\SnagitEditor.exe (3 %)', 'C:\Windows\SysWOW64\Macromed\Flash\FlashPlayerPlugin_11_5_502_146.exe (2 %)', 'firefox.exe (2 %)', and 'firefox.exe (5 %)'. The 'Processes by memory' table lists processes such as 'C:\Windows\SysWOW64\Macromed\Flash\FlashPlayerPlugin_11_5_502_146.exe (249 MB)', 'firefox.exe (465 MB)', 'firefox.exe (420 MB)', and 'OUTLOOK.EXE (141 MB)'.

System usage						Processes by cpu		Processes by memory	
Cpu system usage	Cpu kernel usage	Memory usage	Disk activity	Disk avg read queue	Disk avg write queue	Process 1	Process 2	Process 1	Process 2
11 %	1 %	62 %	18 %	0	0	C:\Program Files (x86)\TechSmith\Snagit\SnagitEditor.exe (3 %)	C:\Windows\SysWOW64\Macromed\Flash\FlashPlayerPlugin_11_5_502_146.exe (2 %)	firefox.exe (465 MB)	C:\Windows\SysWOW64\Macromed\Flash\FlashPlayerPlugin_11_5_502_146.exe (249 MB)
4 %	1 %	67 %	36 %	0	0	firefox.exe (2 %)	C:\Windows\SysWOW64\Macromed\Flash\FlashPlayerPlugin_11_5_502_146.exe (1 %)	firefox.exe (420 MB)	C:\Windows\SysWOW64\Macromed\Flash\FlashPlayerPlugin_11_5_502_146.exe (212 MB)
15 %	4 %	64 %	35 %	0	0	firefox.exe (5 %)	C:\Windows\SysWOW64\Macromed\Flash\FlashPlayerPlugin_11_5_502_146.exe (4 %)	firefox.exe (428 MB)	OUTLOOK.EXE (141 MB)

Image: História online informácií v tabuľkovej forme s vyznačením stĺpcov s TOP procesmi

View of the most burdening processes of CPU, RAM directly via C-Monitor client

List of the most burdening processes can be displayed in the section Scheduler, to which you can enter through tray menu of the C-Monitor icon, as displayed on the following image.



In the left menu click on the section System info, which will load a list of all processes that load CPU and RAM, with more detailed information about the specific processes. Description of the individual parts of this section, and more information can be found at [System info](#) [1].

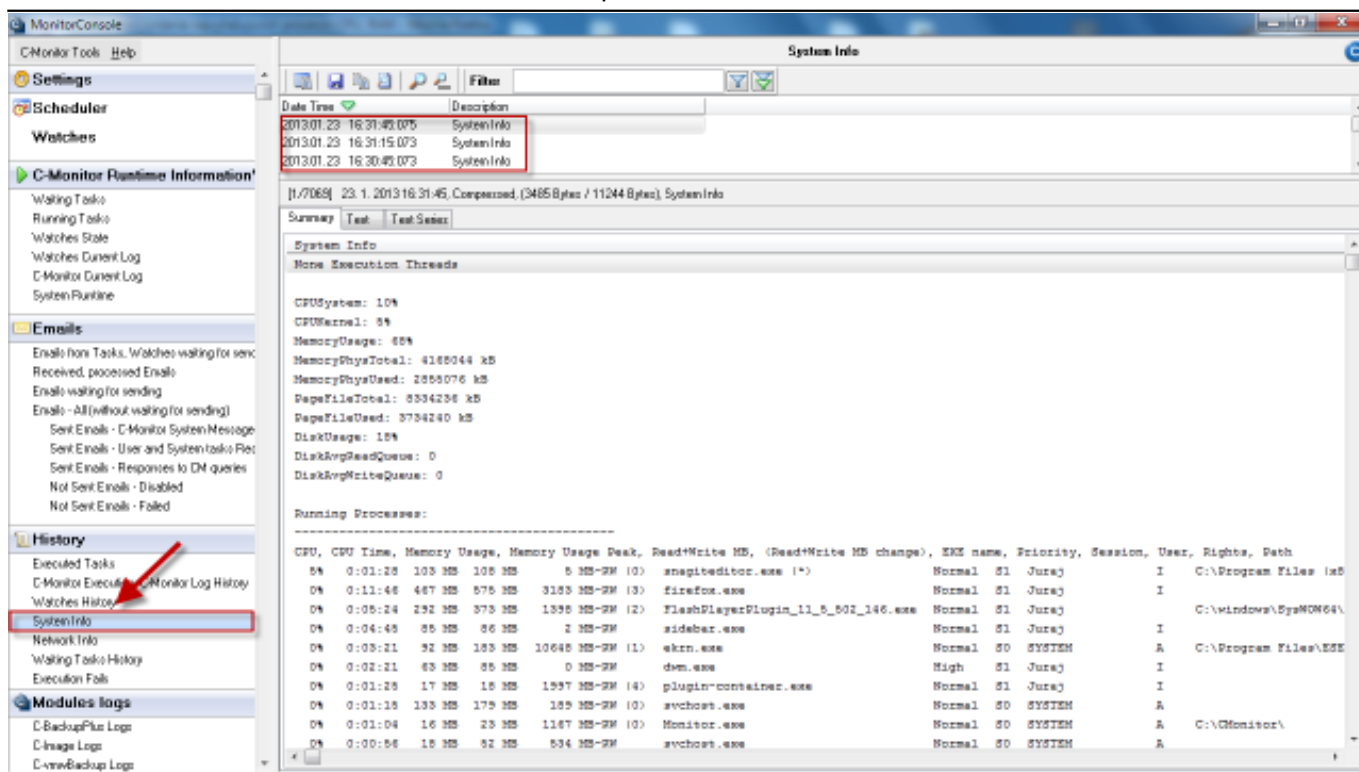


Image: Zobrazenie System info v C-Monitor Windows klientovi

Evaluation and graph of course of the computer's load can be in C-Monitor scheduler also displayed in the section *System Runtime* as shown on the following image. The graph is interactive, which means that if you click anywhere on the graph, you'll see the values of system information that were measured at the time.

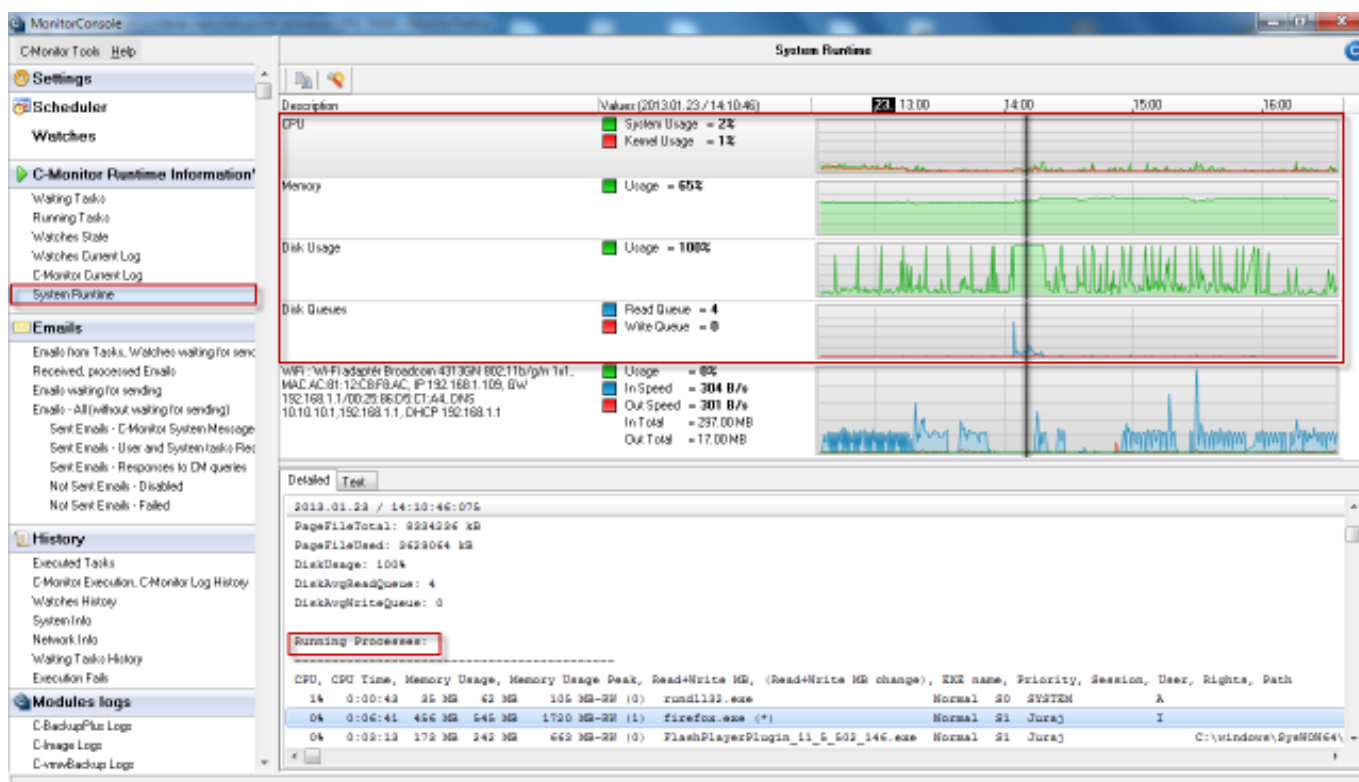


Image: Zobrazenie System Runtime v C-Monitor Windows klientovi

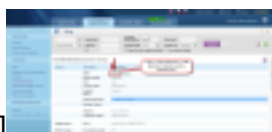
Date:

12/30/2012 External Links:

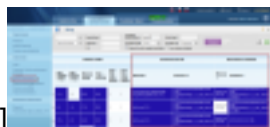
[System info](#) [2] [Online informácie](#) [3] Images:



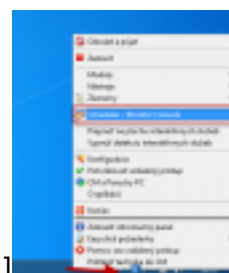
[4]



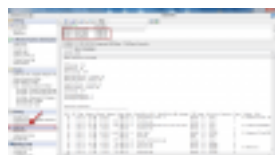
[5]



[6]



[7]



[8]



[9]

Links

[1] <https://www.customermonitor.eu/how-cm-works-0/components-and-architecture-cm/c-monitor-windows-client/c-monitorconsole/system-info>

[2] <https://www.customermonitor.eu/node/793>

[3] <https://www.customermonitor.eu/node/489>

[4] <https://www.customermonitor.eu/sites/default/files/online%20info%20-%20zatazenie%202Btop%20procesy.png>

[5] <https://www.customermonitor.eu/sites/default/files/vstup%20do%20historie.png>

[6] <https://www.customermonitor.eu/sites/default/files/zobrazenie%20najvytazujucej%20procesov%20v%20tabulkovej%20forme.png>

[7] https://www.customermonitor.eu/sites/default/files/vstup%20do%20schedulera_1.png

[8] https://www.customermonitor.eu/sites/default/files/system%20info_1.png

[9] https://www.customermonitor.eu/sites/default/files/system%20runtime_0_0.png