

ESX plugin is functional since the version VMware ESX 5.0, to set a watch for monitoring of vmware ESX servers through ESX plugin, you must know the ESX server's IP address and you need to have a valid login and password. For correct function, you must enable ILO on the server, and set a valid IP address to it.

After fulfilling the basic conditions and setup, move to Scheduler where you'll configure the monitoring. Press the button *add Watch* using the wizard as shown on the next image and enter name of the Watch.

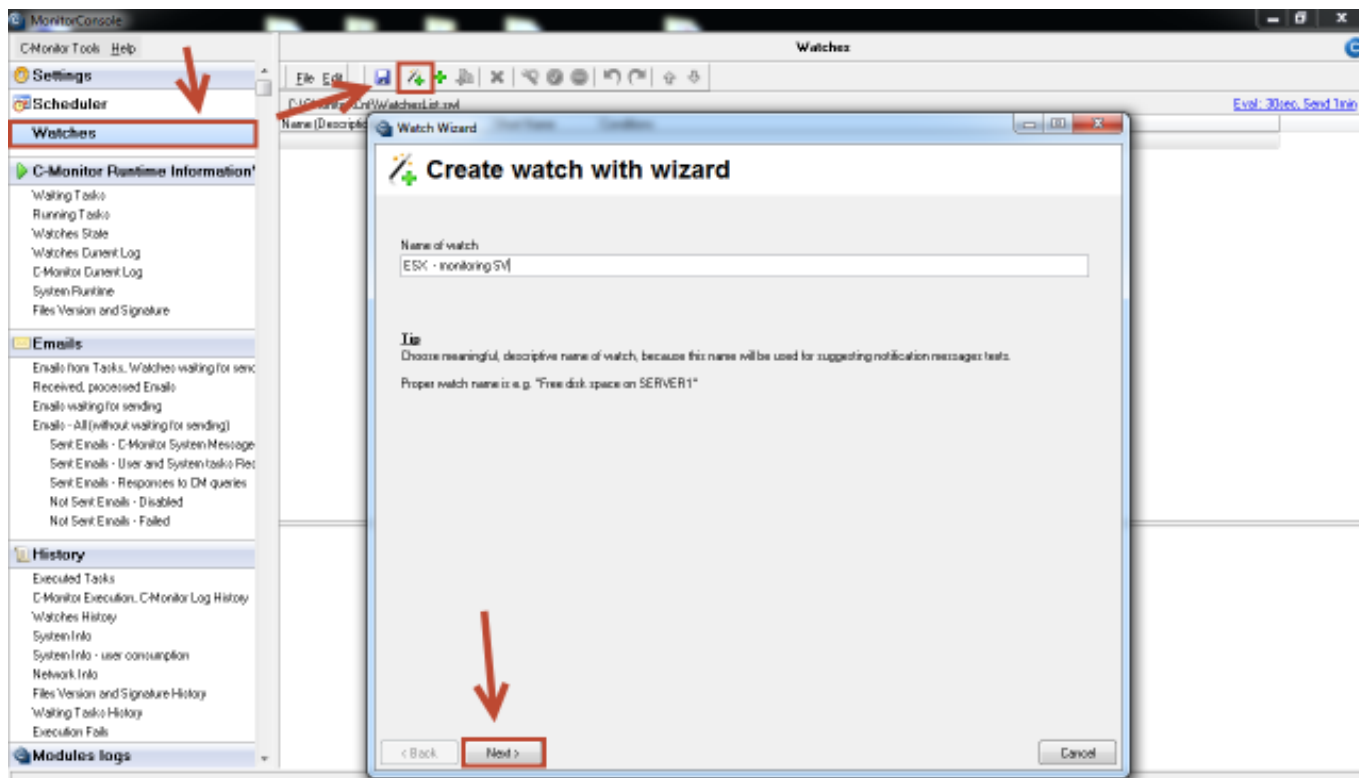


Image: Vytvorenie watchu pre monitoring ESX servera

Subsequently, select from the item *Preddefined health templates* a template called *VMware ESX health plugin*, as displayed on the next image.

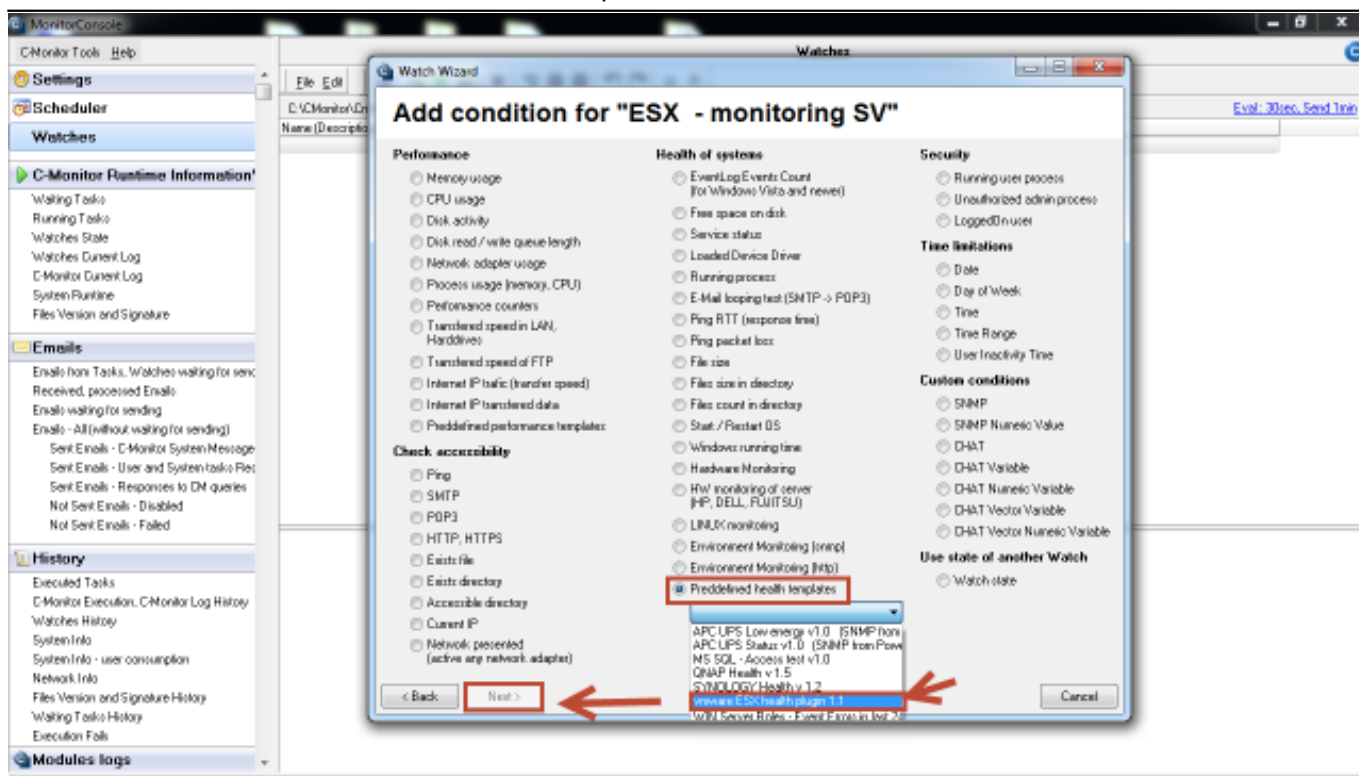


Image: Vyber preddefinovanej šablóny pre ESX plugin

In the next window, enter IP address and login data to the ESX server, then press the button *Test Edit Script*, by which you'll test function of communication between the ESX server and C-Monitor client.

Watch Wizard

vmware ESX health plugin 1.1

Script Name
vmware ESX health plugin 1.1]

Script

Parameter	Value
ESX(i)/vCenter server IP	192.168.1.1
ESX(i)/vCenter server user	root
ESX(i)/vCenter server pass	
Check hosts 'yellow' states	<input checked="" type="checkbox"/>
Check hosts 'red' states	<input checked="" type="checkbox"/>
Check health 'Fan'	<input checked="" type="checkbox"/>
Check health 'Other'	<input checked="" type="checkbox"/>
Check health 'Processors'	<input checked="" type="checkbox"/>
Check health 'Software Components'	<input checked="" type="checkbox"/>

Operation: Successful Test Period: 5 Unit: min

Value from this condition send to CM server
☒ Always
☐ Never

☐ Assess the state of watch

< Back Next > Cancel

Test, Edit Script

Image: Nastavenie IP adresy a prihlasovacích údajov do ESX servera + otestovanie funkčnosti

To launch the script, press the green arrow.

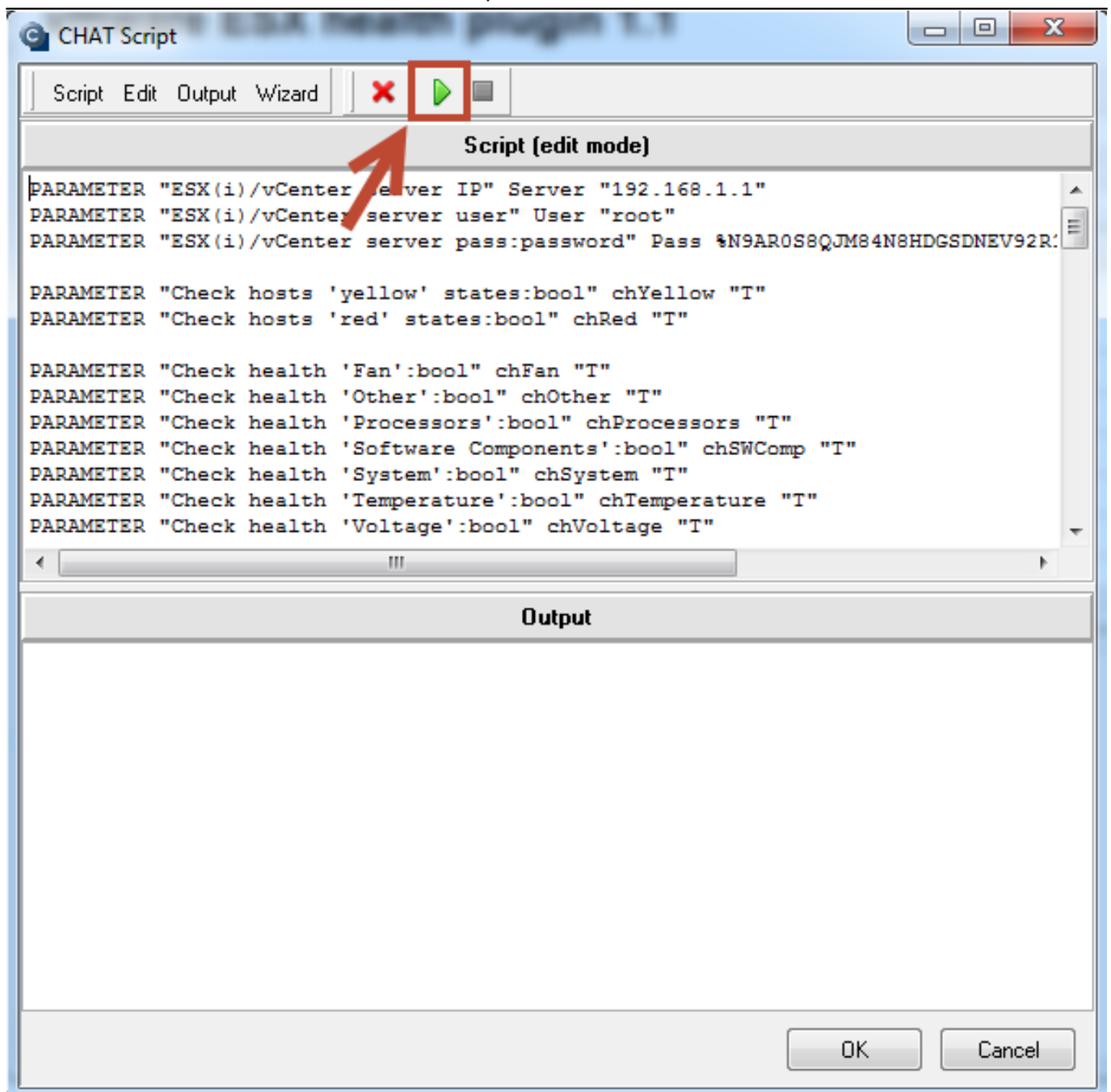


Image: Spustenie skriptu pre otestovanie funkčnosti vyhodnocovania parametrov ESX servera

Before the execution, you'll be prompted to sign the ESX plugin, a successful creation of the signature is displayed on the following image.

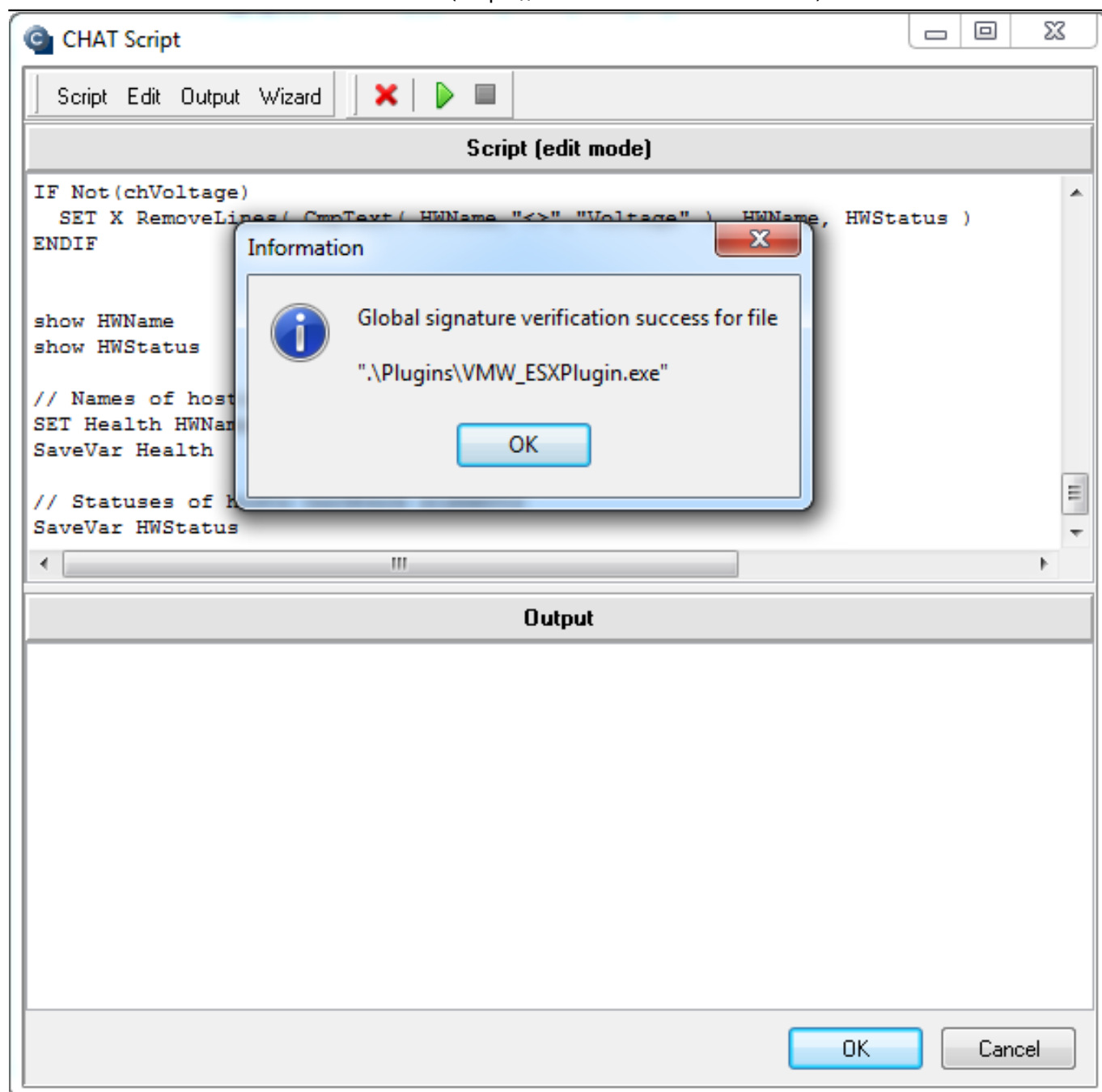


Image: Podpísanie spúšťačieho súboru pre ESX plugin

When the connection is successfully tested, press *Next*. In the next window you'll see a list of parameters, which the ESX plugin evaluates on ESX servers.

Watch Wizard

Conditions for "ESX - monitoring SV"

1	Successful CHAT vmware ESX health plugin 1.1 Check every 5min Each value will be sent to CM Server
2	CHAT Var. "Product" (Product) <> . Check on each watch state evaluation Each value will be sent to CM Server
3	CHAT Vect.Var. "Status[]" (HostStatus) = green Check on each watch state evaluation Each value will be sent to CM Server
4	CHAT Vect.Var. "Model[]" (HostHw) <> . Check on each watch state evaluation Each value will be sent to CM Server
5	CHAT Vect.Var. "Red[]" (HostRed) = none Check on each watch state evaluation Each value will be sent to CM Server
6	CHAT Vect.Var. "Yellow[]" (HostYellow) = none Check on each watch state evaluation Each value will be sent to CM Server
7	CHAT Vect.Var. "Upkeep[]" (HostStatus) = green

State of watch is **OK** if all conditions are true **FAIL** - if at least one condition is false

☐ Delay for FAIL state. (Useful for suppressing short term FAIL state)

☒ If state of the watch is UNKNOWN, notify this by options in actions

☐ Evaluate watch state with longer period than 50s (C-Monitor Tick interval)

Note: Watches are active from 5 minutes after the operating system start

Image: Zoznam parametrov, ktoré sa budú vyhodnocovať

In the next step, set actions that should be executed, in case the Watch is switched to Fail state.

Watch Wizard

Set a **Start** action for "ESX - monitoring SV"

☒ If state of the watch changes to **FAIL**, perform **START** action - execute task, display, log, send notifications...

Description of FAIL state

Start 1

☒ **Enabled**

If state of the watch changes to **FAIL** and is **FAIL** more than do:

☐ Execute Command Line

☐ Display Message to User

☐ Add Message to Log File

☐ Add Message to EventLog

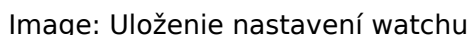
☐ Send SMS (via CM server, must be supported by CM server)

☐ Send E-Mail to custom E-Mail Addresses

< Back Next > Cancel

Image: Nastavenie akcií v prípade prechodu watchu do stavu fail

After passing through the whole wizard, press **Save**, as you can see on the next image.



The current state of the Watch can be viewed through C-Monitor client in the section *Watch state*, as is shown on the next image.



The Watch's state can be viewed also on CM portal, in the section *Presentation and Evaluation -> Presentation -> Watches (online monitoring)*.

Watches (Online monitoring)

Společnost: Počet & Umístění: Zoradit podľa: CM-ID Zoradit Watches podľa: Rozvrhu

Meno Watchu: Zoradit ako: Vozbupne Zoradit Watches ako: Vozbupne

Operator: Zobrazit: Pod sebou ☐ True ☒ False ☐ Unknown ☐ Vymazat watche ☐ Len online PC

Zoznam watches [zobrazení 1 položka]

Stav	Město	Hodnota	Poslední změna stavu	Podmínky k určení stavu	CM ID počítače	Město počítače v síti	Umístění	Posl. online spojení s CM
●	ESX RA server plugin 1.1	CHAT ESX health over plugin 5.1 successful Product VMware ESX 5.0 build-488612 Status esx100 local green Model esx100 local HP ProLiant DL380 G7 Red esx100 local none Yellow esx100 local none Health Proc 1 green Health Proc 2 green Health Memory green Health Power Supply 1: Running/Full Power-Enabled green Health Power Supply 2: Running/Full Power-Enabled green Health Fan green Health Memory green Health Processors green Health Software Components green Health System green Health Temperature green	17. Mar 2014 16:25:10	OK - because all conditions are true ● TRUE - successful CHAT ESX health over plugin 1.1" (3. 4. 2014 6:25:30) ● TRUE - CHAT Var. "Product" "Product" ("VMware ESX 5.0 build-488612") == "1" ● TRUE - CHAT Vaci Var. "Status": esx100 local (green) = green ● TRUE - CHAT Vaci Var. "Model": esx100 local (HP ProLiant DL380 G7) = esx100 local (HP ProLiant DL380 G7) = esx100 local (green) = none ● TRUE - CHAT Vaci Var. "Yellow": esx100 local (none) = none ● TRUE - CHAT Vaci Var. "Health": Proc 1 (green), Proc 2 (green), Memory (green), Power Supply 1: Running/Full Power-Enabled (green), Power Supply 2: Running/Full Power-Enabled (green), Fan (green), Memory (green), Processors (green), Software Components (green), System (green), Temperature (green) = green	ESX100	ESX100	ES - Senecovská, Bratislava	3. Apr 2014 11:25:48

Image: Zobrazenie stavu ESX servera prostredníctvom CM portálu

Date:

02/17/2014