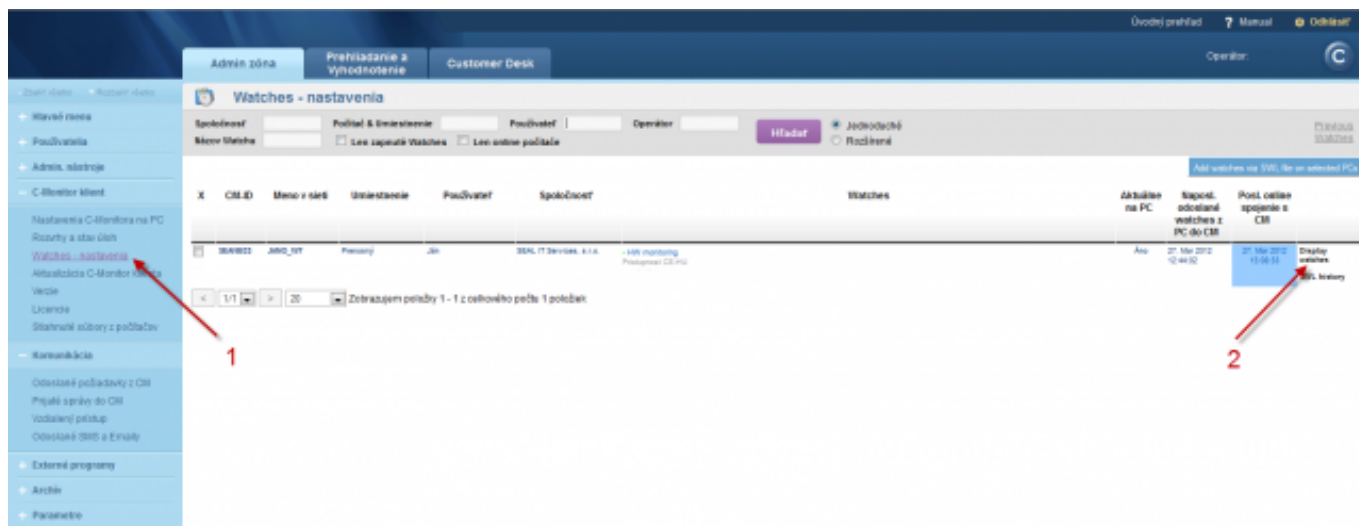


Another option to add a new watch to monitor start of the operating system is CM Portal. Using it is efficient for **remote watch addition for a C-Monitor client without the need to directly access the computer's C-Monitor console.**

This method of adding watches is also used for **MacOS a Linux** operating systems.

By clicking on **"Watches - settings"** in Admin zone, you can add watches to individual computers. You may then click on **"Display watches"** for the selected computer.



**Image: Obrázok: Pridanie nového watchu cez CM portál**

You'll see a list of current watches, if there already any on the computer.

By pressing **"Add Watch"** in the top right corner of the CM Portal, you'll start the creation.

Name the new watch and press **"Continue"**

**New watch**

Name (Description): Computer restart

Short Name: W1

Enabled: ☒

Watch state: OK if all conditions are true  FAIL if at least one condition is false

Notify Unknown State from C-Monitor by Watch actions: ☐

Notify Unknown State from CM server: ☐ Notification can be enabled after updating watch on the computer

Delay for FAIL state: ☐

Evaluation and notification of errors on CM server: For this watch: ALLOWED on CM server  Notification is enabled

For computer: ALLOWED ([Change in computer settings](#))

For customer: ALLOWED ([Change in customer settings](#))

**IMPORTANT NOTE: No modifications during editing of the watch are saved to the database. Watch configuration is updated only by sending the modified configuration to the C-Monitor client.**

Image: Obrázok: Pomenovanie nového watchu a nastavenie parametrov

Then choose the option "**Add condition**" to add conditions for the watch.

### ◀ **Computer restart (SEANB33)**

**General** **Conditions & Actions**

**List of conditions**

Description
-------------

**Add condition**

For **Microsoft operating systems**, select the condition "**Windows running time**".

Suitable setup of operator, time since start of the OS and minimal value change, will secure correct notification about a performed restart.

After finishing the setup, save the settings to CM Server by clicking on "**Apply**"

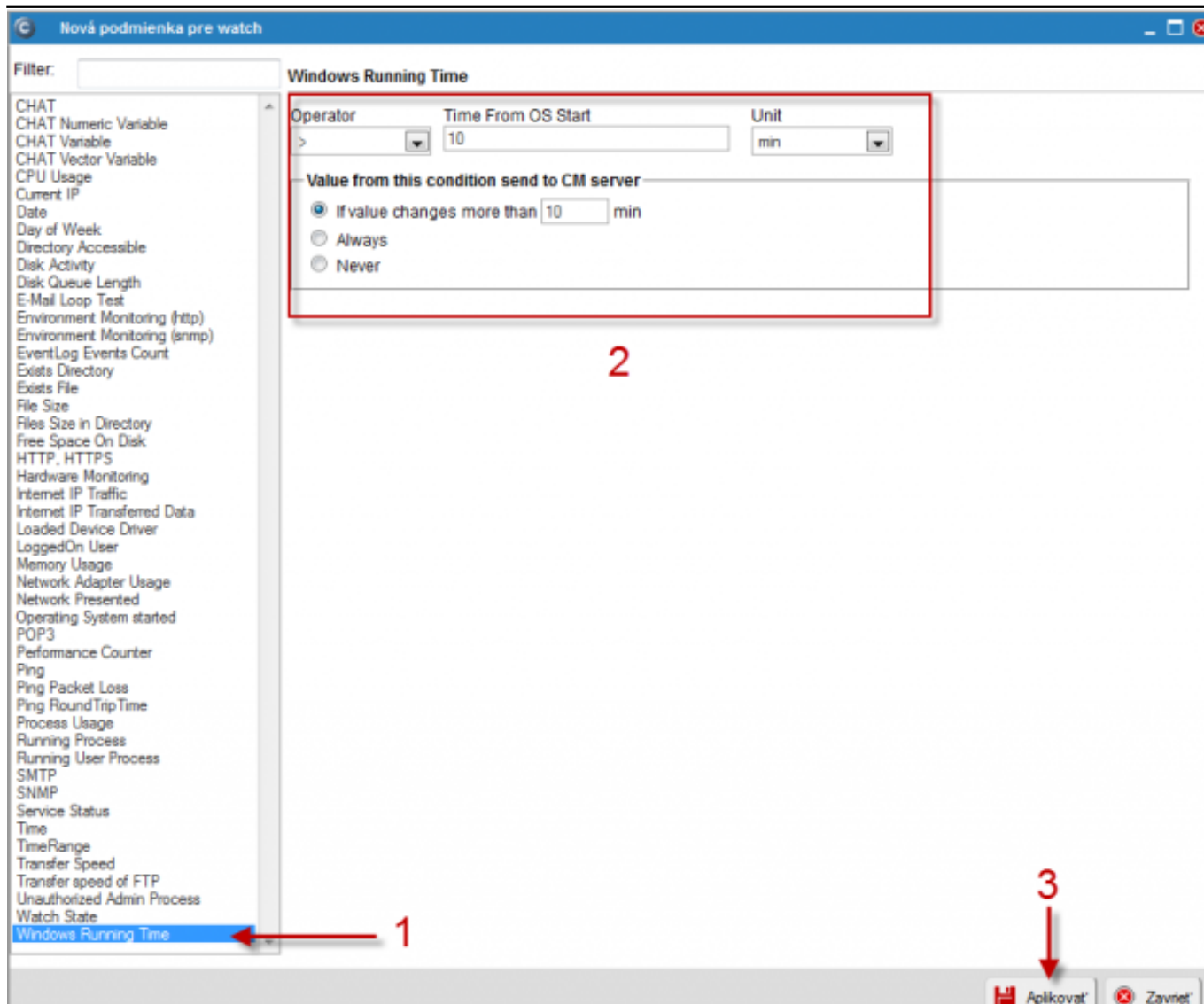


Image: Obrázok: Nastavenie podmienok a uloženie watchu

For **operating systems MacOS and Linux**, it's necessary to use the condition "Operating system started". It is possible to use this condition on **Microsoft** operating systems **as well**.

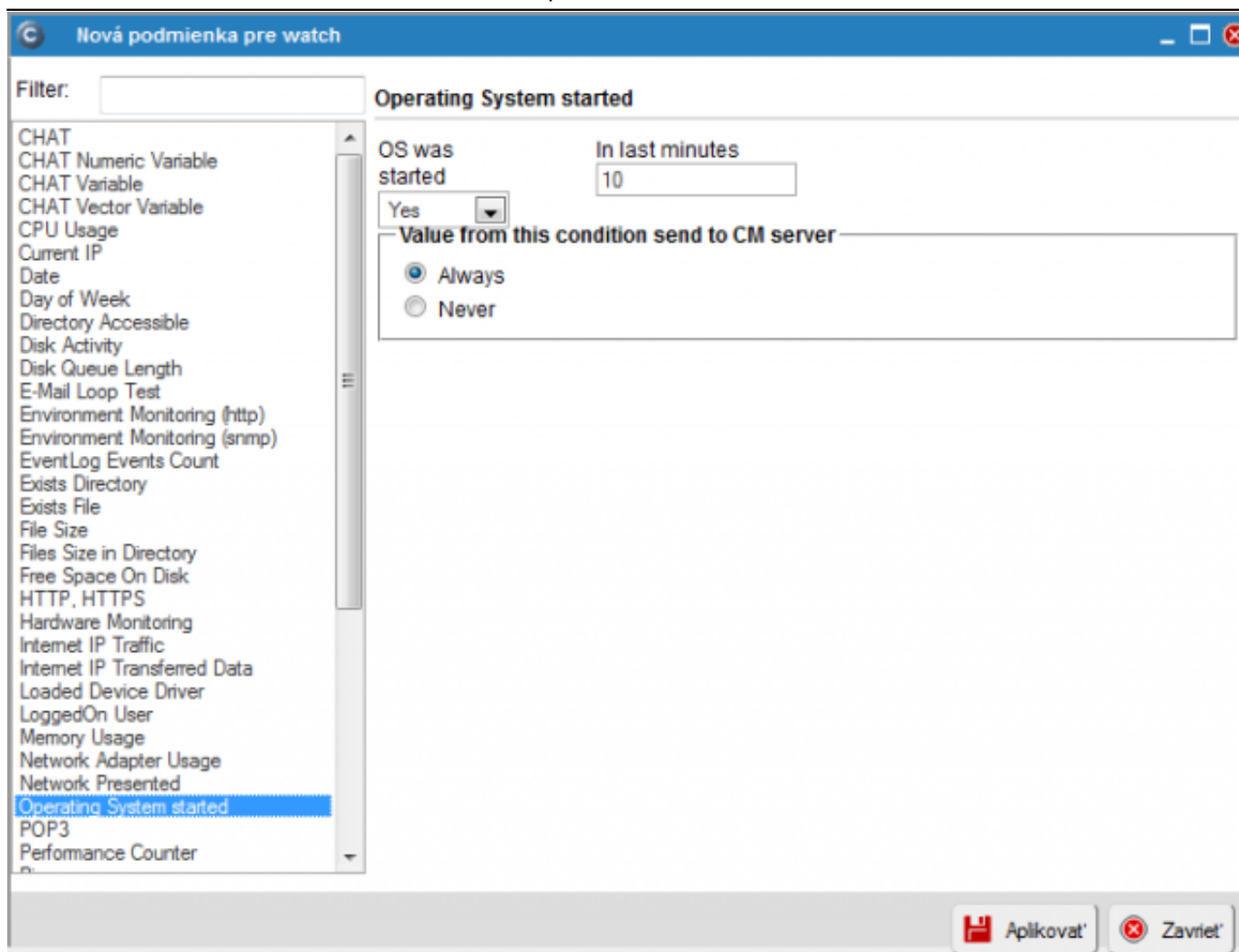


Image: Obrázok: Výber podmienky Operating System started

If needed, the watch can later be edited (1), or added an action (2) ([for setup of Actions, read here](#) [1]). If setup of the watch is completed, it has to be sent to C-Monitor by clicking on **"Update"** (3).

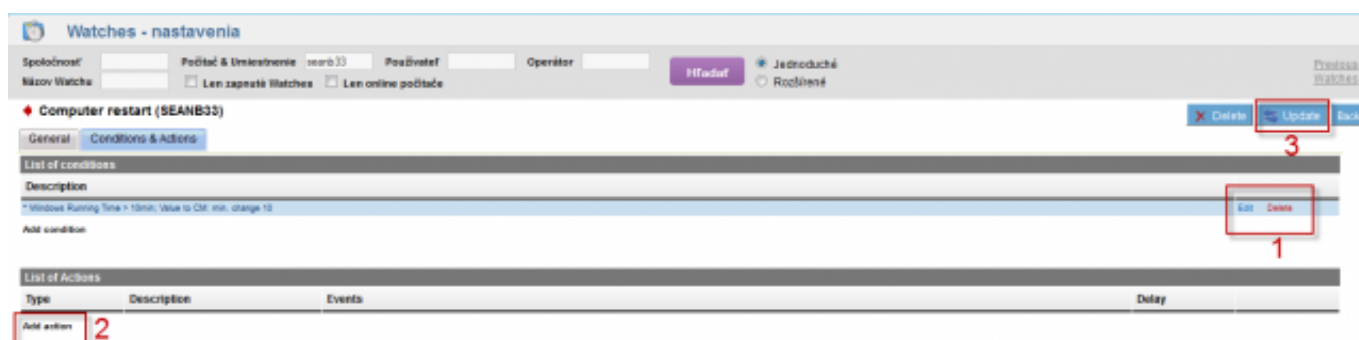


Image: Obrázok: Odoslanie pripraveného watchu do C-Monitoru

When the new watch is received by C-Monitor, the operator is going to be notified about every change of the watch's state, i.e. about each restart of the operating system.

[Current status and check of the last restart can be verified on CM portal at "Presentation and evaluation" > "Watches \(Online monitoring\)"](#) [2]

Date:

03/26/2012

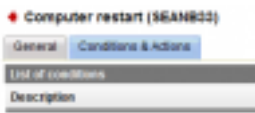
Images:



[3]



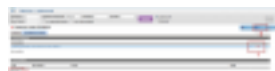
[4]



[5]



[6]



[7]



[8]

## Links

[1] <https://www.customermonitor.eu/how-cm-works-0/monitoring-and-diagnostics/introduction-setting-online-monitoring-watches/settings>

[2] <https://www.customermonitor.eu/how-cm-works-0/monitoring-and-diagnostics/start/restart-computer/monitoring-operating-system-startup>

[3] <https://www.customermonitor.eu/sites/default/files/Add%20watch.png>

[4] <https://www.customermonitor.eu/sites/default/files/Add%20Watch%20CM%20Server.png>

[5] <https://www.customermonitor.eu/sites/default/files/Add%20Watch%20CM%20Server%202.png>

[6] <https://www.customermonitor.eu/sites/default/files/Add%20Watch%20CM%20Server%203.png>

[7] <https://www.customermonitor.eu/sites/default/files/Add%20Watch%20CM%20Server%204.png>

[8] <https://www.customermonitor.eu/sites/default/files/operating%20system%20started%20condition.png>